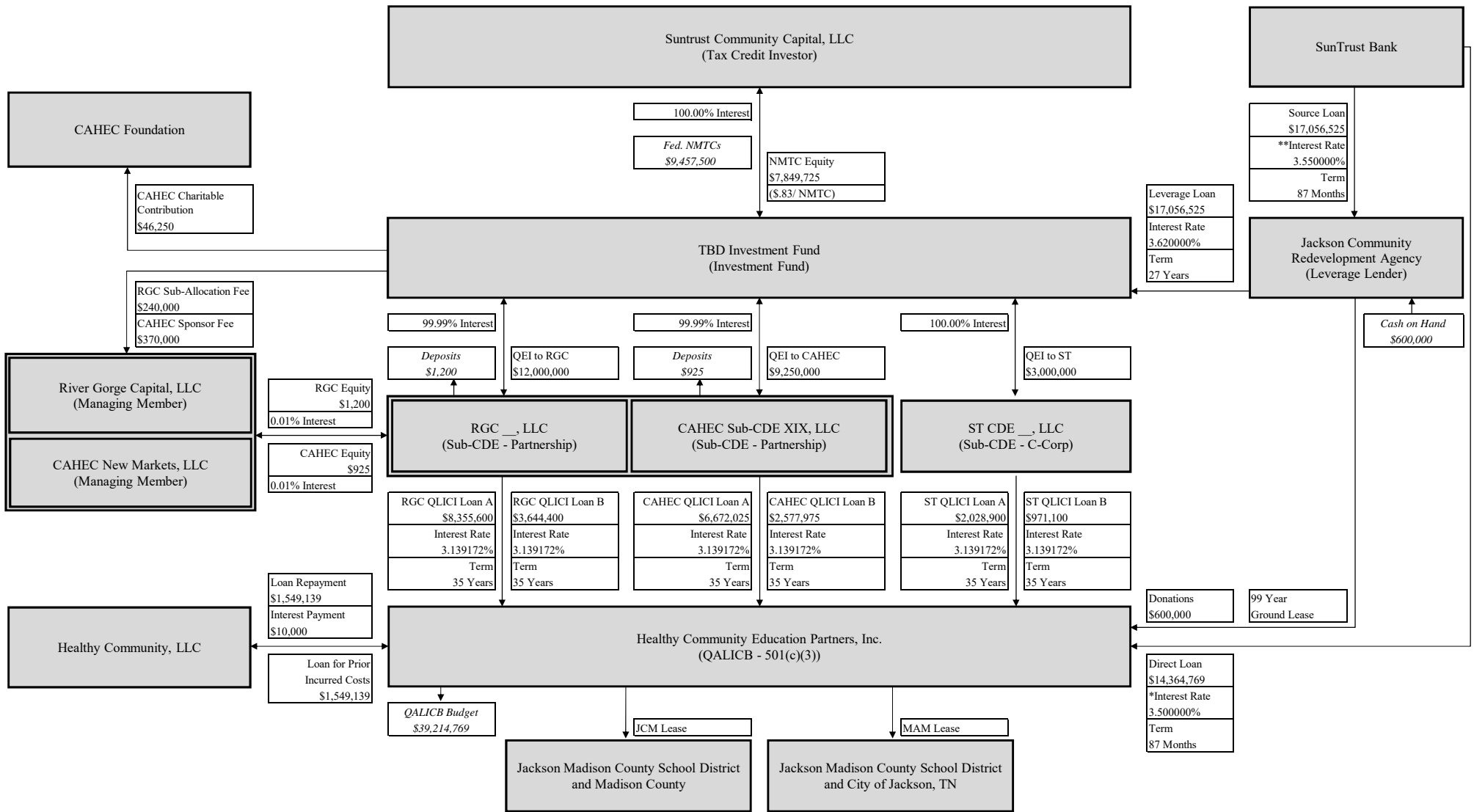


**HEALTHY COMMUNITY EDUCATION PARTNERS, INC.**  
**FINANCIAL FORECAST**  
**SUPPLEMENTAL SCHEDULE OF FORECASTED FLOW OF FUNDS - 100% ALL IN**



\*Interest rate equals ICE Swap Rate + 1.80%. Forecast assumes interest rate is fixed at closing.  
 \*\*Interest rate equals ICE Swap Rate + 1.855%. Forecast assumes interest rate is fixed at closing.