

CITY OF JACKSON  
CAPITAL BUDGET REQUEST SUMMARY

FY 23-FY27

Department	Item	N = NEW R = REPLACEMENT	FY23	FY24	FY25	FY26	FY27	Totals	
1 Animal Care Center	2022 FORD F-250	R	32371					32371	1
2 Animal Care Center		R	32371					32371	2
3 Animal Care Center	CHASIS MOUNTED ANIMAL TRANSPORT UNIT	N	36285					36285	3
4 Animal Care Center	CHASIS MOUNTED ANIMAL TRANSPORT UNIT	N	36285					36285	4
5 Animal Care Center	ANIMAL HANDLING AND TRANSPORT EQUIPMENT	R	10000					10000	5
									6
									7
									8
									9
									10
									11
									12
									13
									14
									15
									16
									17
									18
									19
									20
									21
									22
									23
									24
									25
									26
									27
									28
									29
									30
									31
									32
									33
									34
									35
									36
									37
									38
									39
									40
									41
									42
									43

CITY OF JACKSON  
Capital Request FY 23-27  
Justification

Department Name ANIMAL CARE CENTER  
Item Description TWO FORD F-250 SUPERDUTY TRUCKS

\_\_\_\_\_  
\_\_\_\_\_  
\_\_\_\_\_  
\_\_\_\_\_

Amount \$32,371/TRUCK FOR A TOTAL OF \$64,742  
Justification OUR CURRENT TRUCKS ARE ALMOST 15 YEARS OLD AND HAVE IN EXCESS OF 250k MILES ON THEM. IT HAS BECOME COST PROHIBITIVE TO KEEP REPLACING PARTS AND REPAIRING ISSUES. THEIR HANDLING, STEERING AND EMERGENCY BRAKING RESPONSE HAS BECOME SO BAD THAT THE SAFETY OF THE OFFICERS IS COMPROMISED WHILE DRIVING OR RIDING IN THEM. WE ALSO AREN'T CURRENTLY MEETING INDUSTRY STANDARDS AND BEST PRACTICES FOR ANIMAL HANDLING AND TRANSPORT. TO DO SO, FULL SIZE TRUCKS ARE REQUIRED FOR THE WORK LOAD OUR OFFICERS FACE.

\_\_\_\_\_  
\_\_\_\_\_  
\_\_\_\_\_  
\_\_\_\_\_  
\_\_\_\_\_  
\_\_\_\_\_

CITY OF JACKSON

Capital Request FY 23-27

Justification

Department Name	ANIMAL CARE CENTER
Item Description	CHASIS MOUNTED ANIMAL CONTROL UNIT (TRANSPORT UNIT TO BE MOUNTED TO THE CHASIS OF NEW FULL SIZE TRUCKS)
Amount	\$36,285/ UNIT FOR A TOTAL OF \$72,570
Justification	ANIMAL CONTROL IS CURRENTLY OPERATING WITH EXCEPTIONALLY OUTDATED EQUIPMENT THAT DOES NOT MEET THE DEMAND OF BEST INDUSTRY PRACTICES OR PROFESSIONAL SAFETY STANDARDS. NEW UNITS WILL BETTER PROTECT THE OFFICERS AND THE ANIMALS THAT THEY HANDLE. THEY WILL ALSO HELP MAXIMIZE THE EFFICIENCY OF THE DEPARTMENT BY DECREASING THE MAN HOURS NEEDED TO COMPLETE TRANSPORTS. DECREASE CALL RESPONSE TIME AND IMPROVE PUBLIC PERCEPTION.

CITY OF JACKSON  
Capital Request FY 23-27  
Justification

Department Name ANIMAL CARE CENTER  
Item Description ANIMAL CAPTURE AND HANDLING EQUIPMENT (CATCH POLES, NETS, TONGS, EXTENSION POLE, HUMANE TRAPS, TRANSPORT CRATES, AND SAFETY EQUIPMENT)

Amount \$10,000  
Justification OUR ANIMAL EQUIPMENT HASN'T BEEN UPDATED OR SUPPLEMENTED IN MORE THAN 10 YEARS, SO WE HAVE A SCARCITY OF SUPPLIES FOR THE OFFICERS WORKING IN THE FIELD AND THE TECHS WORKING AT THE SHELTER. OUR STAFF HANDLES MORE THAN 1500 ANIMALS ANNUALLY AND DAMAGED/OUTDATED EQUIPMENT UNNECESSARILY RISKS THE SAFETY OF THE EMPLOYEES AND THE ANIMALS. NEW EQUIPMENT IS REQUIRED TO MEET THE INCREASE IN DEMAND FROM THE PUBLIC WHILE MAINTAINING PROPER SAFETY AND PRODUCTIVITY STANDARDS.

SWC 209  
LONNIE COBB FORD CONTRACT # 72318

---

2022 F-250 4x4 SD Super Cab 8' box 164" WB SRW XL (X2B)  
Price Level: 245

---



**Client Proposal**

Prepared by:  
STEVEN BLACKSTOCK  
Office: 731-989-2121  
Date: 02/09/2022



Lonnie Cobb Ford | 1618 Highway 45 North, Henderson, Tennessee, 383404005  
Office: 731-989-2121 | Fax: 731-989-3502



Prepared by: STEVEN BLACKSTOCK

02/09/2022

Lonnie Cobb Ford | 1618 Highway 45 North Henderson Tennessee | 383404005

2022 F-250 4x4 SD Super Cab 8' box 164" WB SRW XL (X2B)

Price Level: 245

## Selected Equip & Specs

### Dimensions

- Exterior length: 254.4"
- Exterior width: 80.0"
- Wheelbase: 164.0"
- Rear track: 67.2"
- Min ground clearance: 8.5"
- Rear legroom: 33.5"
- Rear headroom: 40.3"
- Rear hiproom: 64.7"
- Rear shoulder room: 65.8"
- Approach angle: 17.8 deg
- Cargo volume: 31.6cu.ft.
- Cab to axle: 56.1"
- Exterior height: 81.4"
- Front track: 68.3"
- Turning radius: 27.1'
- Front legroom: 43.9"
- Front headroom: 40.8"
- Front hiproom: 62.5"
- Front shoulder room: 66.7"
- Passenger volume: 116.0cu.ft.
- Departure angle: 21 deg
- Maximum cargo volume: 31.6cu.ft.

### Powertrain

- 385hp 6.2L SOHC 16 valve V-8 engine with variable valve control, SMPi
- federal
- Part-time
- Fuel Economy Highway: N/A
- Recommended fuel : regular unleaded
- TorqShift-G 6 speed automatic transmission with overdrive
- Fuel Economy Cty: N/A

### Suspension/Handling

- Front Mono-beam non-independent suspension with anti-roll bar, HD shocks
- Firm ride Suspension
- Front and rear 17 x 7.5 argent steel wheels
- Rear rigid axle leaf spring suspension with HD shocks
- Hydraulic power-assist re-circulating ball Steering
- LT245/75SR17 EBSW AS front and rear tires

### Body Exterior

- 4 doors
- Reverse opening right rear passenger
- \* Turn signal indicator in mirrors
- Black bumpers
- Clearcoat paint
- 2 front tow hook(s)
- Reverse opening left rear passenger
- \* Driver and passenger power remote heated, manual folding door mirrors with turn signal indicator
- Black door mirrors
- Class V trailer hitch with trailer sway control
- Front and rear 17 x 7.5 wheels

### Convenience

- Manual air conditioning with air filter
- \* Driver and passenger 1-touch up
- \* Power windows
- \* Driver and passenger 1-touch down

Prices and content availability as shown are subject to change and should be treated as estimates only. Actual base vehicle, package and option pricing may vary from this estimate because of special local pricing, availability or pricing adjustments not reflected in the dealer's computer system. See salesperson for the most current information.



Prepared by: STEVEN BLACKSTOCK

02/09/2022

Lonnie Cobb Ford | 1618 Highway 45 North Henderson Tennessee | 383404005

2022 F-250 4x4 SD Super Cab 8' box 164" WB SRW XL (X2B)

Price Level: 245

## Selected Equip & Specs (cont'd)

- \* **Remote power door locks with 2 stage unlock and illuminated entry**
  - Manual telescopic steering wheel
  - FordPass Connect 4G internet access
  - Wireless phone connectivity
  - 2 1st row LCD monitors
  - Passenger visor mirror
- \* **Driver and passenger door bins**
  - Manual tilt steering wheel
- \* **Day-night rearview mirror with auto-dimming**
  - 911 Assist emergency SOS
  - AppLink smart device integration
  - Front and rear cupholders
  - Full overhead console
- \* **Rear door bins**
  - Front 40-20-40 split-bench seat
  - Manual driver lumbar support
  - Centre front armrest with storage

## Seats and Trim

- Seating capacity of 6
- 4-way driver seat adjustment
- 4-way passenger seat adjustment
- 60-40 folding rear split-bench seat

## Entertainment Features

- AM/FM stereo radio
- Steering wheel mounted radio controls
- Streaming audio

## Lighting, Visibility and Instrumentation

- Halogen aero-composite headlights
- Auto on/off headlights
- Light tinted windows
- Tachometer
- Compass
- Low tire pressure warning
- Trip odometer

- SYNC external memory control
- 4 speakers
- Fixed antenna
- Delay-off headlights
- Variable intermittent front windshield wipers
- Front reading lights
- Oil pressure gauge
- Outside temperature display
- Trip computer

## Safety and Security

- 4-wheel ABS brakes
- 4-wheel disc brakes
- ABS and driveline traction control
- Dual seat mounted side impact airbag supplemental restraint system
- \* **Remote activated perimeter/approach lighting**
- \* **Security system with Securilock immobilizer**
  - Manually adjustable front head restraints
- Brake assist with hill hold control
- AdvanceTrac w/Roll Stability Control Electronic stability control
- Dual front impact airbag supplemental restraint system with passenger cancel
- Safety Canopy System curtain 1st and 2nd row overhead airbag supplemental restraint system
- \* **Power remote door locks with 2 stage unlock and panic alarm**
  - MyKey restricted driving mode
  - 3 manually adjustable rear head restraints

---

Prices and content availability as shown are subject to change and should be treated as estimates only. Actual base vehicle, package and option pricing may vary from this estimate because of special local pricing, availability or pricing adjustments not reflected in the dealer's computer system. See salesperson for the most current information.



Prepared by: STEVEN BLACKSTOCK

02/09/2022

Lonnie Cobb Ford | 1618 Highway 45 North Henderson Tennessee | 383404005

2022 F-250 4x4 SD Super Cab 8' box 164" WB SRW XL (X2B)

Price Level: 245

## Selected Equip & Specs (cont'd)

### Dimensions

#### General Weights

* Curb	6,280 lbs.	GVWR	10,000 lbs.
Payload	3,460 lbs.		

#### Front Weights

Front GAWR	5,600 lbs.	* Front curb weight	3,884 lbs.
Front axle capacity	6,000 lbs.	Front spring rating	5,600 lbs.
Front tire/wheel capacity	6,390 lbs.		

#### Rear Weights

Rear GAWR	6,340 lbs.	* Rear curb weight	2,398 lbs.
Rear axle capacity	6,200 lbs.	Rear spring rating	6,340 lbs.
Rear tire/wheel capacity	6,390 lbs.		

#### Trailerling Type

Type	Regular	Class	V
Hitch	Yes	Trailer sway control	Yes

#### General Trailerling

5th-wheel towing capacity	12500 lbs.	Gooseneck towing capacity	12500 lbs.
Towing capacity	12500 lbs.	GCWR	19500 lbs.

#### Fuel Tank type

Capacity	34 gal.
----------	---------

#### Off Road

Approach angle	18 deg	Departure angle	21 deg
Ramp breakerover angle	21 deg	Min ground clearance	8 "
Load floor height	37 "		

#### Interior cargo

Cargo volume	31.6 cu.ft.	Maximum cargo volume	31.6 cu.ft.
--------------	-------------	----------------------	-------------

### Powertrain

#### Engine Type

Block material	Iron	Cylinders	V-8
Head material	Aluminum	Ignition	Spark
Injection	Sequential MPI	Liters	6.2L
Orientation	Longitudinal	Recommended fuel	Regular unleaded
Valves per cylinder	2	Valvetrain	SOHC
Variable valve control	Yes		

#### Engine Spec

Prices and content availability as shown are subject to change and should be treated as estimates only. Actual base vehicle, package and option pricing may vary from this estimate because of special local pricing, availability or pricing adjustments not reflected in the dealer's computer system. See salesperson for the most current information.





Prepared by: STEVEN BLACKSTOCK

02/09/2022

Lonnie Cobb Ford | 1618 Highway 45 North Henderson Tennessee | 383404005

2022 F-250 4x4 SD Super Cab 8' box 164" WB SRW XL (X2B)

Price Level: 245

### Selected Equip & Specs (cont'd)

Bore	4.02"	Compression ratio	9.8:1
Displacement	379 cu.in.	Stroke	3.74"
<i>Engine Power</i>			
SAEJ1349 AUG2004 compliant	Yes	Output	385 HP @ 5,750 RPM
Torque	430 ft.-lb @ 3,800 RPM		
<i>Alternator</i>			
Amps	157		
<i>Battery</i>			
Amp hours	72	Cold cranking amps	650
Run down protection	Yes		
<i>Transmission</i>			
Electronic control	Yes	Lock-up Speed	Yes
Overdrive	Yes		6
Type	Automatic		
<i>Transmission Gear Ratios</i>			
1st	4.17	2nd	2.34
3rd	1.52	4th	1.14
5th	0.87	6th	0.69
Reverse Gear ratios	3.4		
<i>Transmission Torque Converter</i>			
Stall ratio	2.01		
<i>Transmission Extras</i>			
Driver selectable mode	Yes	Sequential shift control	SelectShift
Oil cooler	Regular duty		
<i>Drive Type</i>			
4wd type	Part-time	Type	Four-wheel
<i>Drive Feature</i>			
Traction control	ABS and driveline	Locking hub control	Auto
Transfer case shift	Electronic	* Rear locking differential	Driver selectable
<i>Drive Axle</i>			
Ratio	3.73		
<i>Exhaust</i>			
Material	Stainless steel	System type	Single
<i>Emissions</i>			
CARB	Federal		

Prices and content availability as shown are subject to change and should be treated as estimates only. Actual base vehicle, package and option pricing may vary from this estimate because of special local pricing, availability or pricing adjustments not reflected in the dealer's computer system. See salesperson for the most current information.



Prepared by: STEVEN BLACKSTOCK

02/09/2022

Lonnie Cobb Ford | 1618 Highway 45 North Henderson Tennessee | 383404005

2022 F-250 4x4 SD Super Cab 8' box 164" WB SRW XL (X2B)

Price Level: 245

### Selected Equip & Specs (cont'd)

#### *Fuel Economy*

Fuel type Gasoline

#### *Fuel Economy (Alternate 1)*

Fuel type E85

#### *Acceleration*

0-60 mph (s) 6.77

#### *1/4 Mile*

Seconds 15.2

#### *Skid Pad*

Lateral acceleration (g) 0.6

#### *Slalom*

Speed 50 mph

#### *Driveability*

#### *Brakes*

ABS Type 4-wheel disc 4-wheel disc ABS channels Vented discs 4 Front and rear

#### *Brake Assistance*

Brake assist Yes Hill hold control Yes

#### *Suspension Control*

Ride Firm Electronic stability control anti-roll Stability control with anti-roll

#### *Front Suspension*

Independence Mono-beam non-independent Anti-roll bar Regular

#### *Front Spring*

Type Coil Grade Regular

#### *Front Shocks*

Type HD Regular

#### *Rear Suspension*

Independence Rigid axle Type Leaf

#### *Rear Spring*

Type Leaf Grade HD

#### *Rear Shocks*

Type HD

Prices and content availability as shown are subject to change and should be treated as estimates only. Actual base vehicle, package and option pricing may vary from this estimate because of special local pricing, availability or pricing adjustments not reflected in the dealer's computer system. See salesperson for the most current information.



Prepared by: STEVEN BLACKSTOCK

02/09/2022

Lonnie Cobb Ford | 1618 Highway 45 North Henderson Tennessee | 383404005

2022 F-250 4x4 SD Super Cab 8' box 164" WB SRW XL (X2B)

Price Level: 245

### Selected Equip & Specs (cont'd)

<i>Steering</i>			
Activation	Hydraulic power-assist	Type	Re-circulating ball
<i>Steering Specs</i>			
# of wheels	2		
<i>Exterior</i>			
<i>Front Wheels</i>			
Diameter	17"	Width	7.50"
<i>Rear Wheels</i>			
Diameter	17"	Width	7.50"
<i>Spare Wheels</i>			
Wheel material	Steel		
<i>Front and Rear Wheels</i>			
Appearance	Argent	Material	Steel
Covers	Hub		
<i>Front Tires</i>			
Aspect	75	Diameter	17"
Sidewalls	BSW	Speed	S
Tread	AS	Type	LT
Width	245mm	LT load rating	E
RPM	649		
<i>Rear Tires</i>			
Aspect	75	Diameter	17"
Sidewalls	BSW	Speed	S
Tread	AS	Type	LT
Width	245mm	LT load rating	E
RPM	649		
<i>Spare Tire</i>			
Mount	Underbody w/crankdown	Type	Full-size
<i>Wheels</i>			
Front track	68.3"	Rear track	67.2"
Turning radius	27.1'	Wheelbase	164.0"
<i>Body Features</i>			
* Skid plate(s)	2	Body material	Aluminum
Side impact beams	Yes	Front tow hook(s)	2
<i>Body Doors</i>			

Prices and content availability as shown are subject to change and should be treated as estimates only. Actual base vehicle, package and option pricing may vary from this estimate because of special local pricing, availability or pricing adjustments not reflected in the dealer's computer system. See salesperson for the most current information.



Prepared by: STEVEN BLACKSTOCK

02/09/2022

Lonnie Cobb Ford | 1618 Highway 45 North Henderson Tennessee | 383404005

2022 F-250 4x4 SD Super Cab 8' box 164" WB SRW XL (X2B)

Price Level: 245

### Selected Equip & Specs (cont'd)

Door count	4	Left rear passenger	Reverse opening
Right rear passenger			
<i>Exterior Dimensions</i>			
Length	254.4"	Body width	80.0"
Body height	81.4"	Cab to axle	56.1"
* Axle to end of frame	47.6"	Frame section modulus	10.7cu.in.
Frame yield strength (psi)	50000.0	Front bumper to Front axle	38.2"
Front bumper to back of cab	146.3"		

### Safety

#### Airbags

Driver front-impact	Yes	Driver side-impact	Seat mounted
Overhead Safety Canopy System curtain 1st and 2nd row		Passenger front-impact	Cancellable
Passenger side-impact	Seat mounted		

#### Seatbelt

Rear centre 3 point	Yes	Height adjustable	Front
---------------------	-----	-------------------	-------

#### Security

Immobilizer	SecuriLock	* Panic alarm	Yes
Restricted driving mode	MyKey		

### Seating

#### Passenger Capacity

Capacity	6
----------	---

#### Front Seats

Split	40-20-40	Type	Split-bench
-------	----------	------	-------------

#### Driver Seat

Fore/aft	Manual	Reclining	Manual
Way direction control	4	Lumbar support	Manual

#### Passenger seat

Fore/aft	Manual	Reclining	Manual
Way direction control	4		

#### Front Head Restraint

Control	Manual	Type	Adjustable
---------	--------	------	------------

#### Front Armrest

Centre	Yes	Storage	Yes
--------	-----	---------	-----

Prices and content availability as shown are subject to change and should be treated as estimates only. Actual base vehicle, package and option pricing may vary from this estimate because of special local pricing, availability or pricing adjustments not reflected in the dealer's computer system. See salesperson for the most current information.



Prepared by: STEVEN BLACKSTOCK

02/09/2022

Lonnie Cobb Ford | 1618 Highway 45 North Henderson Tennessee | 383-404005

2022 F-250 4x4 SD Super Cab 8' box 164" WB SRW XL (X2B)

Price Level: 245

### Selected Equip & Specs (cont'd)

#### Rear Seats

Descriptor	Split-bench	Facing	Front
Folding Type	60-40 Fixed	Folding position	Fold-up cushion

#### Rear Head Restraints

Control	Manual	Type	Adjustable
Number	3		

#### Front Seat Trim

Material	Vinyl	Back material	Vinyl
----------	-------	---------------	-------

#### Rear Seat Trim Group

Material	Vinyl	Back material	Carpet
----------	-------	---------------	--------

#### Convenience

##### AC And Heat Type

Air conditioning	Manual	Air filter	Yes
Underseat ducts	Yes		

##### Audio System

Radio	AM/FM stereo	Radio grade	Regular
Seek-scan	Yes	External memory control	SYNC

##### Audio Speakers

Speaker type	Regular	Speakers	4
--------------	---------	----------	---

##### Audio Controls

Steering wheel controls	Yes	Voice activation	Yes
Streaming audio	Bluetooth yes		

##### Audio Antenna

Type	Fixed		
------	-------	--	--

##### LCD Monitors

1st row	2	Primary monitor size (inches)	4.2
---------	---	-------------------------------	-----

##### Convenience Features

* Retained accessory power	Yes	12V DC power outlet	2
Emergency SOS	911 Assist	Wireless phone connectivity	Bluetooth
Smart device integration	App link		

##### Door Lock Activation

* Type	Power with 2 stage unlock	* Remote	Keyfob (front doors)
* Integrated key/remote	Yes		

Prices and content availability as shown are subject to change and should be treated as estimates only. Actual base vehicle, package and option pricing may vary from this estimate because of special local pricing, availability or pricing adjustments not reflected in the dealer's computer system. See salesperson for the most current information.



Prepared by: STEVEN BLACKSTOCK

02/09/2022

Lonnie Cobb Ford | 1618 Highway 45 North Henderson Tennessee | 383404005

2022 F-250 4x4 SD Super Cab 8' box 164" WB SRW XL (X2B)

Price Level: 245

### Selected Equip & Specs (cont'd)

#### Door Lock Type

\* Tailgate/rear door lock Included with power door locks

#### Door Locks Extra FOB Controls

Remote engine start Smart device only

#### Instrumentation Type

Appearance Analog

#### Instrumentation Gauges

Tachometer Yes  
Engine temperature Yes  
Engine hour meter Yes

#### Instrumentation Warnings

Oil pressure Yes  
Battery Yes  
Key Yes  
Door ajar Yes  
Brake fluid Yes

#### Instrumentation Displays

Clock In-radio display Yes  
Exterior temp Yes

#### Instrumentation Feature

Trip computer Yes

#### Steering Wheel Type

Material Urethane  
Telescoping Manual

#### Front Side Windows

\* Window 1st row activation Power

#### Windows Rear Side

\* 2nd row activation Power

#### Window Features

\* 1-touch down Driver and passenger  
Tinted Light

#### Front Windshield

Wiper Variable intermittent

#### Rear Windshield

\* 1-touch up Driver and passenger

Prices and content availability as shown are subject to change and should be treated as estimates only. Actual base vehicle, package and option pricing may vary from this estimate because of special local pricing, availability or pricing adjustments not reflected in the dealer's computer system. See salesperson for the most current information.



Prepared by: STEVEN BLACKSTOCK  
02/09/2022

Lonnie Cobb Ford | 1618 Highway 45 North Henderson Tennessee | 383404005

2022 F-250 4x4 SD Super Cab 8' box 164" WB SRW XL (X2B)

Price Level: 245

## Selected Equip & Specs (cont'd)

Window	Fixed			
<b>Interior</b>				
<i>Passenger Visor</i>				
Mirror	Yes			
<i>Rear View Mirror</i>				
Day-night	Yes	* Auto-dimming		Yes
<i>Headliner</i>				
Coverage	Full	Material		Cloth
<i>Floor Trim</i>				
Coverage	Full	Covering		Vinyl/rubber
<i>Trim Feature</i>				
Gear shifter material	Urethane	Interior accents		Chrome
<i>Lighting</i>				
Dome light type	Fade	Front reading		Yes
* Illuminated entry	Yes	Variable IP lighting		Yes
<i>Overhead Console Storage</i>				
Storage	Yes	Type		Full
<i>Storage</i>				
* Driver door bin	Yes	Front Beverage holder(s)		Yes
Glove box	Locking	* Passenger door bin		Yes
Illuminated	Yes	Rear yes		Yes
Instrument panel	Covered bin	Dashboard		Yes
* Rear door bins	Yes			
<i>Legroom</i>				
Front	43.9"	Rear		33.5"
<i>Headroom</i>				
Front	40.8"	Rear		40.3"
<i>Hip Room</i>				
Front	62.5"	Rear		64.7"
<i>Shoulder Room</i>				
Front	66.7"	Rear		65.8"
<i>Interior Volume</i>				
Passenger volume	116.0 cu.ft.			

Prices and content availability as shown are subject to change and should be treated as estimates only. Actual base vehicle, package and option pricing may vary from this estimate because of special local pricing, availability or pricing adjustments not reflected in the dealer's computer system. See salesperson for the most current information.



Prepared by: STEVEN BLACKSTOCK  
02/09/2022

Lonnie Cobb Ford | 1618 Highway 45 North Henderson Tennessee | 383404005

2022 F-250 4x4 SD Super Cab 8' box 164" WB SRW XL (X2B)

Price Level: 245

## Warranty

### Standard Warranty

#### *Basic*

Distance 36,000 miles Months 36 months

#### *Powertrain*

Distance 60,000 miles Months 60 months

#### *Corrosion Perforation*

Distance Unlimited miles Months 60 months

#### *Roadside Assistance*

Distance 60,000 miles Months 60 months

Prices and content availability as shown are subject to change and should be treated as estimates only. Actual base vehicle, package and option pricing may vary from this estimate because of special local pricing, availability or pricing adjustments not reflected in the dealer's computer system. See salesperson for the most current information.



Prepared by: STEVEN BLACKSTOCK  
02/09/2022



Lonnie Cobb Ford | 1618 Highway 45 North Henderson Tennessee | 383404005  
2022 F-250 4x4 SD Super Cab 8' box 164" WB SRW XL (X2B)  
Price Level: 245

## As Configured Vehicle

Code	Description	MSRP
X2B	Base Vehicle Price (X2B)	\$41,830.00
600A	Order Code 600A <i>Includes:</i> - Engine: 6.2L 2-Valve SOHC EFI NA V8 Flex-Fuel - Transmission: TorqShift-G 6-Spd Auto w/SelectShift - GVWR: 10,000 lb Payload Package - Tires: LT245/75R17E BSW A/S (4) Spare may not be the same as road tire. - Wheels: 17" Argent Painted Steel Includes painted hub covers/center ornaments. - HD Vinyl 40/20/40 Split Bench Seat Includes center armrest, cupholder, storage and driver's side manual lumbar. - Radio: AM/FM Stereo w/MP3 Player Includes 4 speakers. - SYNC Communications & Entertainment System Includes enhanced voice recognition with 911 Assist, 4.2" LCD center stack screen, AppLink and 1 smart-charging USB-C port.	N/C
996	Engine: 6.2L 2-Valve SOHC EFI NA V8 Flex-Fuel	Included
44S	Transmission: TorqShift-G 6-Spd Auto w/SelectShift	Included
X3E	Electronic-Locking w/3.73 Axle Ratio	\$390.00
STDGV	GVWR: 10,000 lb Payload Package	Included
TD8	Tires: LT245/75R17E BSW A/S (4) <i>Spare may not be the same as road tire.</i>	Included
64A	Wheels: 17" Argent Painted Steel <i>Includes painted hub covers/center ornaments.</i>	Included
512	Spare Tire, Wheel, Carrier & Jack  Required in RI. Spare tire is standard equipment; becomes optional when (66D) Pickup Box Delete is ordered.	\$295.00
A	HD Vinyl 40/20/40 Split Bench Seat <i>Includes center armrest, cupholder, storage and driver's side manual lumbar.</i>	Included
164WB	164" Wheelbase	STD
90L	Power Equipment Group <i>Deletes passenger-side lock cylinder. Includes upgraded door trim panel.</i>  <i>Includes:</i> - Accessory Delay - Trailer Tow Mirrors w/Power Heated Glass <i>Includes manual folding, manually telescoping, heated convex spotter mirror and integrated clearance lamps and turn signals.</i>	\$915.00

Prices and content availability as shown are subject to change and should be treated as estimates only. Actual base vehicle, package and option pricing may vary from this estimate because of special local pricing, availability or pricing adjustments not reflected in the dealer's computer system. See salesperson for the most current information.

Prepared by: STEVEN BLACKSTOCK

02/09/2022

Lonnie Cobb Ford | 1618 Highway 45 North Henderson Tennessee | 383404005

2022 F-250 4x4 SD Super Cab 8' box 164" WB SRW XL (X2B)

Price Level: 245



## As Configured Vehicle (cont'd)

Code	Description	MSRP
	<ul style="list-style-type: none"> <li>- Advanced Security Pack</li> <li>- Includes: SecurILock Passive Anti-Theft System (PATS) and inclination/intrusion sensors.</li> <li>- Power Locks</li> <li>- Power Tailgate Lock</li> <li>- Power Front &amp; Rear Seat Windows</li> <li>- Includes 1-touch up/down driver/passenger window.</li> <li>- Remote Keyless Entry</li> </ul>	
66D	<p><b>Pickup Box Delete</b></p> <p>Deletes tie-down hooks, tailgate, rearview camera, 7/4 pin connector and center high-mounted stop lamp (CHMSL) (only on vehicles over 10,000 lbs. GVWR). Incomplete vehicle package - requires further manufacture and certification by a final stage manufacturer. In addition, Ford urges manufacturers to follow the recommendations of the Ford Incomplete Vehicle Manual and the Ford Truck Body Builder's Layout Book (and applicable supplements).</p> <p><i>Includes:</i></p> <ul style="list-style-type: none"> <li>- Rear Bumper Delete</li> <li>- Spare Wheel, Tire, Carrier &amp; Jack Delete</li> </ul>	<b>-\$625.00</b>
41P	<p><b>Transfer Case &amp; Fuel Tank Skid Plates</b></p> <p>The selection of 66D Pickup Box Delete adjusts the curb weight, but does not modify the payload. For payload information, contact your upfitter (final stage manufacturer) or review the Body Builder Advisory Service (BBAS) website (<a href="http://www.fordbbas.com">www.fordbbas.com</a>).</p>	<b>\$100.00</b>
872	<p><b>Rear View Camera &amp; Prep Kit</b></p> <p>Pre-installed content includes cab wiring, frame wiring to the rear most cross member and video display with 4" display. Upfitters kit includes camera with mounting bracket, 14' jumper wire and camera mounting, aiming instructions and electrochromic mirror.</p>	<b>\$415.00</b>
PAINT	<p><b>Monotone Paint Application</b></p> <p style="text-align: right;"><b>STD</b></p>	
587	<p><b>Radio: AM/FM Stereo w/MP3 Player</b></p> <p>Includes 4 speakers.</p> <p><i>Includes:</i></p> <ul style="list-style-type: none"> <li>- SYNC Communications &amp; Entertainment System</li> <li>- Includes enhanced voice recognition with 911 Assist, 4.2" LCD center stack screen, AppLink and 1 smart-charging USB-C port.</li> </ul>	<b>Included</b>
WARANT	<p><b>Fleet Customer Powertrain Limited Warranty</b></p> <p><b>Requires valid FIN code.</b></p> <p>Ford is increasing the 5-year 60,000-mile limited powertrain warranty to 5-years, 100,000 miles. Only Fleet purchasers with a valid Fleet Identification Number (FIN code) will receive the extended warranty. When the sale is entered into the sales reporting system with a sales type fleet along with a valid FIN code, the warranty extension will automatically be added to the vehicle. The extension will stay with the vehicle even if it is subsequently sold to a non-fleet customer before the expiration. This extension applies to both gas and diesel powertrains. Dealers can check for the warranty extension on eligible fleet vehicles in OASIS. Please refer to the Warranty and Policy Manual section 3.13.00 Gas Engine Commercial Warranty. This change will also be reflected in the printed Warranty Guided distributed with the purchase of every new vehicle.</p>	<b>N/C</b>
425	<p><b>50-State Emissions System</b></p> <p style="text-align: right;"><b>STD</b></p>	

Prices and content availability as shown are subject to change and should be treated as estimates only. Actual base vehicle, package and option pricing may vary from this estimate because of special local pricing, availability or pricing adjustments not reflected in the dealer's computer system. See salesperson for the most current information.



Prepared by: STEVEN BLACKSTOCK

02/09/2022

Lonnie Cobb Ford | 1618 Highway 45 North Henderson Tennessee | 383404005

2022 F-250 4x4 SD Super Cab 8' box 164" WB SRW XL (X2B)

Price Level: 245

### As Configured Vehicle (cont'd)

Code	Description	MSRP
AS_01	Medium Earth Gray w/HD Vinyl 40/20/40 Split Bench Seat	N/C
Z1_01	Oxford White	N/C
cab steps 2	F250/f350/f450/f550 cab steps <i>black or chrome tube cab steps</i>	\$650.00
<b>SUBTOTAL</b>		\$43,970.00
<b>Destination Charge</b>		\$1,695.00
<b>TOTAL</b>		\$45,665.00

---

Prices and content availability as shown are subject to change and should be treated as estimates only. Actual base vehicle, package and option pricing may vary from this estimate because of special local pricing, availability or pricing adjustments not reflected in the dealer's computer system. See salesperson for the most current information.



Prepared by: STEVEN BLACKSTOCK

02/09/2022

Lonnie Cobb Ford | 1618 Highway 45 North Henderson Tennessee | 383.404.005

2022 F-250 4x4 SD Super Cab 8' box 164" WB SRW XL (X2B)

Price Level: 245

## Pricing Summary - Single Vehicle

	<b>MSRP</b>
<i>Vehicle Pricing</i>	
Base Vehicle Price	\$41,830.00
Options	\$1,490.00
Colors	\$0.00
Upfitting	\$650.00
Fleet Discount	\$0.00
Fuel Charge	\$0.00
Destination Charge	\$1,695.00
<b>Subtotal</b>	<b>\$45,665.00</b>

### *Pre-Tax Adjustments*

<b>Code</b>	<b>Description</b>	<b>MSRP</b>
fleet discount	fleet discount	-\$13,294.00
<b>Total</b>		<b>\$32,371.00</b>

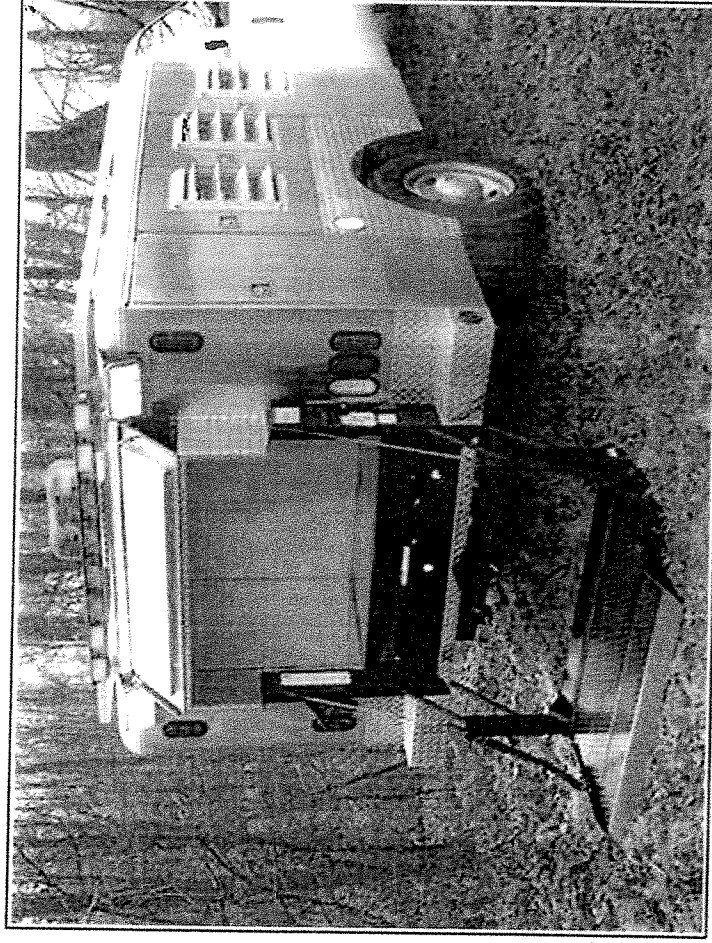
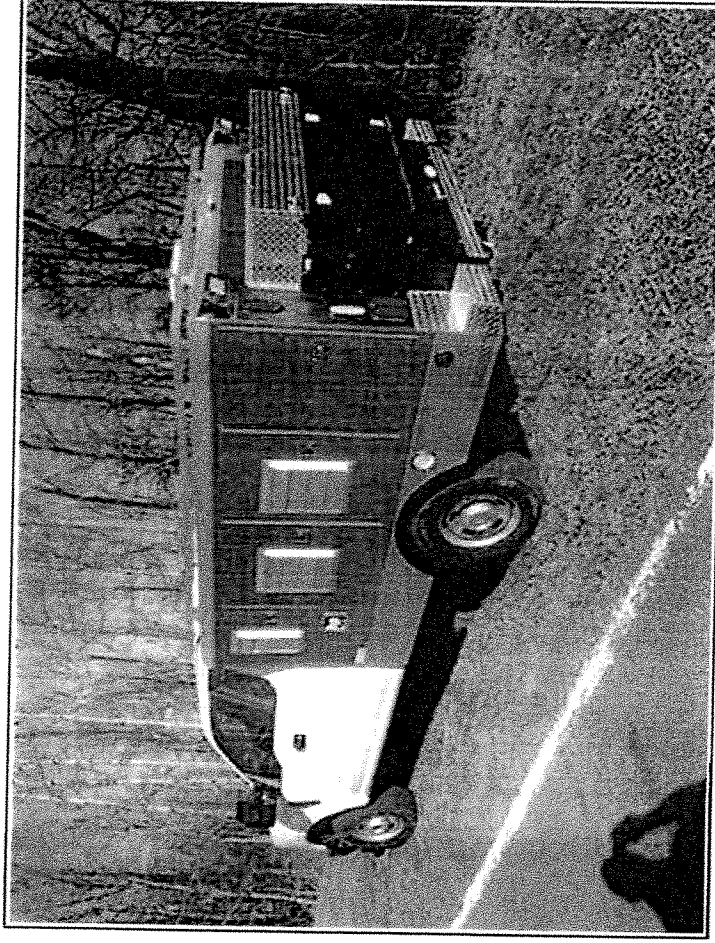
Customer Signature \_\_\_\_\_

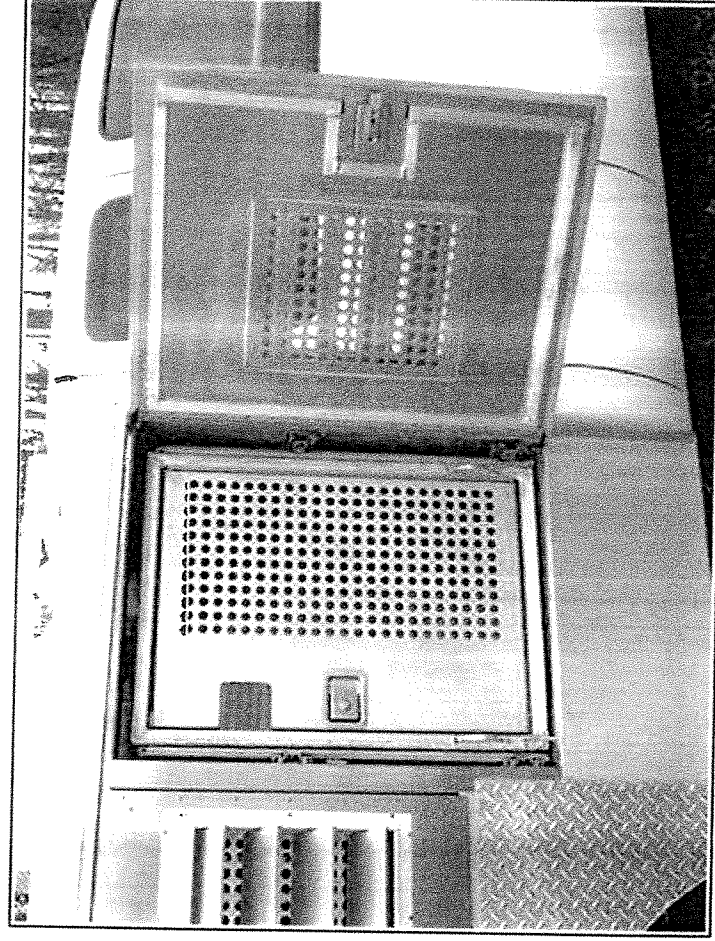
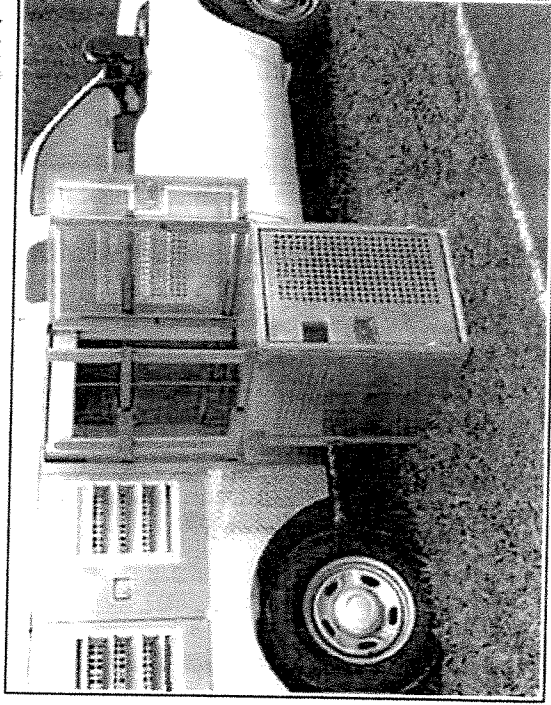
Acceptance Date \_\_\_\_\_

Prices and content availability as shown are subject to change and should be treated as estimates only. Actual base vehicle, package and option pricing may vary from this estimate because of special local pricing, availability or pricing adjustments not reflected in the dealer's computer system. See salesperson for the most current information.

## Model SSCMD17

Model SSCMD is a Stainless Steel Chassis Mount Deluxe transportation unit designed for Animal Control with all the features that are optional on other units. The SSCMD includes the following features:





## Standard Features:

- **Superior Appearance:** This goes a long ways in promoting the image of the officer in the field
- **All Aluminum Framework:** An all-aluminum framework prevents rusting and reduces weight for less wear and tear on the truck and improved fuel economy.
- **Insulation:** The SSCMD has insulation on roof, floor, end walls and divider walls to insulate from outside temperatures and provides more efficient cooling and heating.
- **Stainless Steel: Interior and exterior is stainless steel.**
- **Side Compartment Lift:** The center side animal compartment features a lift cage. This is extremely helpful when loading large animals. Simply open the exterior door, pull the cage out, press a button

to lower the cage to the ground, load the animal, then reverse the procedure to raise the cage and secure it in the compartment. This feature does not require the ACO to lift the animal at all to load them.

- **Doors:** Stainless Steel exterior doors with heavy duty locking slam latches keyed alike. All animal compartment doors include operable louvers with interior shields. Includes gas struts to hold doors open when loading/unloading animals.
- **Exhaust Fan:** Includes a 12-volt dual squirrel cage exhaust fan
- **Ventilated:** All animal doors have operable lower vents with perforated shields on the inside to provide excellent fresh air ventilation.
- **AC/Heat:** Includes a minimum 14,000 BTU Cooling/12,000 BTU Heating unit that is ducted into each individual compartment. \*\*Requires a truck chassis with RL34A system \*\*
- **Safety Doors:** All animal compartments feature interior safety doors made with 1" aluminum tubing. The safety door includes a catch-pole notch so aggressive animals can be loaded/unloaded while still under the control of the catch-pole.
- **Storage Compartments:** Includes storage compartments on each side of the unit with shelves and carpeted floors as well as rear center storage area. Thru-Storage on top for Catch Poles.
- **Lift Gate/Dead Animal Compartment:** The rear of the unit features a lift gate and large storage area for loading/transporting dead animals, cages, etc.
- **Clean-Out:** All animal compartments have floor drains to make wash-out easy. The compartments also include a heavy duty rubber mat.
- **Rear Step Bumper:** A rear step bumper is built into the unit.
- **Skirt:** The sides of the unit are skirted to the bottom of the body line.
- **Hinges:** All doors feature full length stainless steel piano hinges.
- **Lights:** All lights are LED lights for low amperage draw. Lighting includes all DOT required lighting as well as side area clear lights, rear scene lights, rear directional arrow bar light, interior animal compartment lights and revolving roof mounted light.
- **Rear Camera:** Includes rear back-up camera.
- **Roof Rack:** Includes an aluminum tubing roof rack. This is useful when hauling traps on the roof as it provides a place to tie-off to.
- **Roof:** The roof is diamond tread aluminum to reduce heat transfer inside the animal compartments.
- **Thermometer:** Includes a digital thermometer with the display mounted on the dash allowing the driver to monitor compartment temperatures.
- **Warranty:** Full two year warranty

## Compartment Sizes:

Front Animal Compartments

25"W x 25"T x 40"D

Center Animal Compartments

28"W x 36"T x 40"D

Rear Animal Compartments

25"W x 36"T x 40"D

Side Storage Compartments

21"W x 36"T x 15"D

Rear Center Storage Compartment

50"W x 36"T x 21"D

## Pricing (Effective 1/1/22)

Name	Price
SSCMD17 Unit	\$35,400.00
Mounting at JCM facility	\$885.00

## Drawings:

- SSCMD17 (pdf/sscmd-1.jpg)

Copyright © Jackson Creek Manufacturing, Inc. 2022

Site maintained by South Davidson Technologies (<http://www.sdtechnic.com>)



# JACKSON ANIMAL CARE CENTER

DATE: February 14, 2022

FOR: EQUIPMENT COST ESTIMATE

COMPANY NAMES: TRU CATCH, JACKSON CREEK MFG, CHEWY, ARMORHAND, AND ACES

DESCRIPTION	# OF ITEMS	COST	AMOUNT
TRU CATCH FAT CAT TRAP	10.00	\$110.99	\$ 1,109.90
TRU CATCH CAT TRAP	10.00	\$86.99	\$ 869.90
TRU CATCH DOG TRAP	5.00	\$269.99	\$ 1,349.95
TRU CATCH TRAP WHEEL KIT	2.00	\$85.99	\$ 171.98
TRU CATCH LARGE TRAP DIVIDER	1.00	\$35.99	\$ 35.99
TRU CATCH SMALL TRAP DIVIDER	1.00	\$25.99	\$ 25.99
TRU CATCH CARRIER	4.00	\$73.99	\$ 295.96
TRU CATCH NAME PLATE FOR TRAPS	40.00	\$5.99	\$ 239.60
			\$ -
JCM KETCH ALL POLE	6.00	\$79.95	\$ 479.70
JCM EXTENSION KETCH ALL POLE	1.00	\$147.50	\$ 147.50
JCM CAT GRASPER	4.00	\$75.00	\$ 300.00
JCM SNAKE TONGS	2.00	\$118.00	\$ 236.00
			\$ -
ARMORHAND BITE PREVENTION GLOVES	4.00	\$149.00	\$ 596.00
			\$ -
CHEWY WIRE DOG CRATES	25.00	\$54.99	\$ 1,374.75
CHEWY CAT CARRIERS	25.00	\$41.99	\$ 1,049.75
			\$ -
ACES SOFT STRETCHERS	4.00	\$97.00	\$ 388.00

DESCRIPTION	# OF ITEMS	COST	AMOUNT
ACES SOFT CAT MUZZLES	2.00	\$21.50	\$ 43.00
ACES DOG MUZZLES	2.00	\$59.00	\$ 118.00
ACES 3CC SYRINGE POLE	1.00	\$110.00	\$ 110.00
ACES 6CC SYRINGE POLE	1.00	\$120.00	\$ 120.00
ACES CAGE NET WITH COVER	3.00	\$110.00	\$ 330.00
ACES VERSA NET	1.00	\$150.00	\$ 150.00
ACES CAT SACKS	1.00	\$85.95	\$ 85.95
			\$ -
		SUBTOTAL	\$ 9,627.92
		TAX RATE	0.00%
		SALES TAX	\$ -
		OTHER	
		TOTAL	\$ 9,627.92

CITY OF JACKSON  
CAPITAL BUDGET REQUEST SUMMARY

FY 23-FY27

Department	Item	N = NEW R = REPLACEMENT	FY23	FY24	FY25	FY26	FY27	Totals
110-44150 Athletics	Convert Conger Park courts 5&6 to Pickle Ball courts	N	\$140,000					\$140,000
2 110-44150 Athletics	Resurface 4 Tennis courts and 6 pickle ball courts (1,2,3,4,7,8) Conger Park	R		\$38,000				\$38,000
3 110-44150 Athletics	Convert Malesus Park Tennis 4 Courts to post-tension concrete	R			\$225,000			\$225,000
4 110-44150 Athletics	Convert North Park Tennis 6 courts to post tension concrete	R				\$335,000		\$335,000
5 110-44150 Athletics	Artificial turf added to NP inline hockey rink to Soccer field	N		140,000				140,000
6								
7								
8								
9								
10								
11								
12								
13								
14								
15								
16								
17								
18								
19								
20								
21								
22								
23								
24								
25								
26								
27								
28								
29								
30								
31								
32								
33								
34								
35								
36								
37								
38								
39								
40								
41								
42								
43								

CITY OF JACKSON  
Capital Request FY 23-27  
Justification

Department Name	<u>110-44150 Athletics</u>
Item Description	<u>Artificial turf added to in-line hockey rink surface at North Park to turf soccer field</u>
Amount	<u>\$140,000</u>
Justification	<u>The in-line hockey rink is no longer used for hockey. The sport is no longer attractive in Jackson. However, it is used by many to play small-sided soccer games. Also, it is a concrete surface that can be converted into a surface that could be exceptional. If we added a quality artificial turf to the existing concrete pad one could have a year round play, practices, etc. Also, it could save some wear and tear on our grass fields. Adding this turf would add tremendous value to a park feature that is no longer used. Additionally, adding turf would be mostly maintenance free. Debris removal is required and the turf would last 20 years.</u>

CITY OF JACKSON  
Capital Request FY 23-27  
Justification

Department Name 110-44150 Athletics

Item Description Resurface Tennis courts 1-4 and Pickle Ball courts at Conger Park

\_\_\_\_\_

\_\_\_\_\_

\_\_\_\_\_

\_\_\_\_\_

\_\_\_\_\_

\_\_\_\_\_

\_\_\_\_\_

Amount \$38,000

Justification Conger Park tennis courts 1-4 are our first courts converted to post-tension concrete. They have held up tremendously well and have cost \$0 to maintain the playing surfaces since the conversion. However, it will be time for them to have them resurfaced to maintain a quality, textured playing surface for the next several years. The 6 Pickle Ball courts that were added on courts 7-8 have received heavy play since construction, and will require resurfacing to maintain high quality, textured playing surface for years of use.

\_\_\_\_\_

\_\_\_\_\_

\_\_\_\_\_

\_\_\_\_\_

\_\_\_\_\_

\_\_\_\_\_

CITY OF JACKSON  
Capital Request FY 23-27  
Justification

Department Name 110-44150 Athletics

Item Description Post tension concrete Malesus Park tennis courts

\_\_\_\_\_  
\_\_\_\_\_  
\_\_\_\_\_  
\_\_\_\_\_  
\_\_\_\_\_

Amount \$225,000

Justification Malesus Park has the only City Of Jackson tennis courts out south. They have been in extremely bad shape for years due to being the old asphalt style courts from the past. Asphalt courts do not hold up under the extreme weather we have in Jackson, and deteriorate yearly. They get severe cracks and potholes similar to roads. Patching only works temporarily. To have the highest quality, most long term, cost efficient courts, post-tension concrete is exceptional for the up-front investment. We have 14 post-tension concrete courts, the oldest being 7 years at Conger Park. We have had \$0 in playing surface costs since the conversion, and planning to resurface.

\_\_\_\_\_  
\_\_\_\_\_  
\_\_\_\_\_  
\_\_\_\_\_  
\_\_\_\_\_

CITY OF JACKSON  
Capital Request FY 23-27  
Justification

Department Name 110-44150 Athletics

Item Description Post tension concrete 6 tennis courts at North Park

\_\_\_\_\_  
\_\_\_\_\_  
\_\_\_\_\_  
\_\_\_\_\_  
\_\_\_\_\_  
\_\_\_\_\_

Amount \$335,000

Justification North Park has 6 tennis courts. They are the old asphalt type courts. They are in extremely bad condition with severe cracking. North Park courts has been patched multiple times and with the extreme weather in Jackson, continue to deteriorate. Converting the 6 courts to post-tension concrete will provide a long term solution to the playing surface, with only occasionally requiring a re-surfacing coat to maintain quality, textured playing surfaces every few years.

\_\_\_\_\_  
\_\_\_\_\_  
\_\_\_\_\_  
\_\_\_\_\_  
\_\_\_\_\_  
\_\_\_\_\_

CITY OF JACKSON  
Capital Request FY 23-27

Justification

Department Name	<u>110-44150 Athletics</u>
Item Description	<u>Convert Conger Park Tennis courts 5&amp;6 to 6 Pickle Ball courts</u>
Amount	<u>\$140,000</u>
Justification	<u>Pickle Ball is the fastest growing sport in USA. Due to the increased interest in play and the growth of the sport, we need more in Jackson. Courts 5-6 are asphalt tennis courts that are no longer used because of severe cracking. Converting courts 5&amp;6 into 6 high quality, post tension pickle ball courts would provide a solution to overcrowding. Additionally, we have set aside Saturday and Sunday afternoons for Pickle Ball play on one of the indoor courts at VW tennis center for rented contract play during the winter months because of the popularity of the sport. Also, There are multiple leagues and tournaments that are played in Jackson at the Conger Park courts. Over 200 participants, including those from surrounding cities and states played in Jackson in the fall of 2021. Additional courts would see those numbers increase.</u>



**CITY OF JACKSON  
CAPITAL BUDGET REQUEST SUMMARY**

FY 23-FY27

Department	Item	N = NEW R = REPLACEMENT	FY22 CARRY OVER	FY23	FY24	FY25	FY26	FY27	Totals
1 Ballpark of Jackson	John Deere Reel Mower	R		56000					56000
2									
3									
4									
5									
6									
7									
8									
9									
10									
11									
12									
13									
14									
15									
16									
17									
18									
19									
20									
21									
22									
23									
24									
25									
26									
27									
28									
29									
30									
31									
32									
33									
34									
35									
36									
37									
38									
39									
40									
41									
42									
43									

CITY OF JACKSON  
Capital Request FY 23-27  
Justification

Department Name Ballpark of Jackson  
Item Description John Deere Reel mower

Amount \$56,000.00  
Justification The current mower has over 3,500 engine hours & in need of replacement. The quote we got was from a state contracted vendor so no extended process is needed for purchase.

CITY OF JACKSON  
CAPITAL BUDGET REQUEST SUMMARY

FY 23-FY27

Department	Item	N = NEW R = REPLACEMENT	FY22 CARRY OVER	FY23	FY24	FY25	FY26	FY27	Totals
1 Building Department	2022 F-150 4x4 SuperCab 6.5' box 145" WB XL (X1E)	Replacement		\$34,207					\$34,207.00
2 Building Department	2023 F-150 4x4 SuperCab 6.5' box 145" WB XL (X1E)	Replacement							\$35,233.21
3 Building Department	2024 F-150 4x4 SuperCab 6.5' box 145" WB XL (X1E)	Replacement			\$35,233.21				\$36,290.20
4 Building Department	2025 F-150 4x4 SuperCab 6.5' box 145" WB XL (X1E)	Replacement				\$36,290.20			\$37,378.91
5 Building Department	2026 F-150 4x4 SuperCab 6.5' box 145" WB XL (X1E)	Replacement					\$38,500.28		\$38,500.28
6									
7									
8									
9									
10									
11									
12									
13									
14									
15									
16									
17									
18									
19									
20									
21									
22									
23									
24									
25									
26									
27									
28									
29									
30									
31									
32									
33									
34									
35									
36									
37									
38									
39									
40									
41									
42									
43									





CITY OF JACKSON

Capital Request FY 23-27

Justification

Department Name	Building Department
Item Description	2024 F-150 4x4 SuperCab 6.5' box 145" WB XL (X1E)
Amount	\$36,290.20
Justification	NEEDED TO REPLACE 2011 FORD F 150 UNIT #1034







CITY OF JACKSON  
CAPITAL BUDGET REQUEST SUMMARY

FY 23-FY27

Department	Item	N = NEW	R = REPLACEMENT	FY22 CARRY OVER	FY23	FY24	FY25	FY26	FY27	Totals
1 City Hall	Remove and Replace Water Stop and Caulking on Exterior of Building	R		\$ 65,000.00	\$ 68,000.00					133,000.00
2 City Hall	ADA Renovations for Restrooms	R								65,000.00
3 City Hall	Complete replacement of ceiling tiles in basement	R					\$ 60,000.00			60,000.00
4										
5										
6										
7										
8										
9										
10										
11										
12										
13										
14										
15										
16										
17										
18										
19										
20										
21										
22										
23										
24										
25										
26										
27										
28										
29										
30										
31										
32										
33										
34										
35										
36										
37										
38										
39										
40										
41										
42										
43										







CITY OF JACKSON  
CAPITAL BUDGET REQUEST SUMMARY

FY 23-FY27

Department	Item	N = NEW R = REPLACEMENT	FY22 CARRY OVER	FY23	FY24	FY25	FY26	FY27	Totals
1 Civic Center	Repair understructure on telescopic risers	R	80,000.00	2000					10000
2 Civic Center	Replace wooden 60" tables with plastic ones	R			5000				5000
Civic Center	Flyrail cable/rope replacement	R							9500
Civic Center	Upgrade outdoor lighting to LED and more modern look	R			95000				95000
4 Civic Center	Remodel/Upgrade elevators	R				72000			72000
5 Civic Center	Replace super trooper spotlights	R					150000		150000
6 Civic Center		R					85000		85000
7									
8									
9									
10									
11									
12									
13									
14									
15									
16									
17									
18									
19									
20									
21									
22									
23									
24									
25									
26									
27									
28									
29									
30									
31									
32									
33									
34									
35									
36									
37									
38									
39									
40									
41									
42									

CITY OF JACKSON  
Capital Request FY 23-27

Justification

Department Name Civic Center  
Item Description 6" L" frames + stops need to be replaced.

Amount \$100,000.00  
Justification I have been quoted 25K per section if this would allow us to get the worse sections repaired this next year.

- We could potentially use any ARPA funds remaining for this project as more than \$90,000 could be spent.



CITY OF JACKSON  
Capital Request FY 23-27  
Justification

Department Name Civic Center  
Item Description Replace fly rail ropes/cables. This  
needs to be done every 10 yrs & those existing  
ones are just due.

Amount \$93,000.00  
Justification \$30,000 of this would be cables alone. The  
additional money would go towards rope, pulleys, chain,  
shackles etc. to be able to mount & make everything  
function.



CITY OF JACKSON  
Capital Request FY 23-27  
Justification

Department Name Civic Center  
Item Description Outdoor lighting

Amount \$ 72,000.00

Justification The white globe lights around the building and on the poles are outdated & not energy efficient. We would replace them w/ LED fixtures & actually eliminate several fixtures w/ the use of LED. It would also provide energy savings.

CITY OF JACKSON  
Capital Request FY 23-27  
Justification

Department Name Civic Center  
Item Description Elevator upgrade / remodel

Amount \$150,000.00

Justification Our elevators are constantly being repaired & most parts are not even available any more b/c of their age. This would give a more up to date look to our facility.

The last quote I was given ranges from 75K to 100K per elevator depending on what was used.

CITY OF JACKSON  
Capital Request FY 23-27  
Justification

Department Name Civic Center  
Item Description Super Trooper Spotlights

Amount \$85,000.00  
Justification Our spotlights are 37 years old & use outdated bulbs & technology to run. We will have already spent around 15K this year just to get them in semi working condition.

CITY OF  
CAPITAL BUDGET F

FY 23-FY27

Department	Item	N = NEW R = REPLACEMENT
1 Fairgrounds	Paint entirety of facilities exterior.	
2 Fairgrounds	Replace the parks 3-rail fence.	N
3 Fairgrounds	Purchase 200 Heavy Duty 8 ft. tables.	N
4 Fairgrounds	Pitched concrete footing around Exhibit Building	N
5 Fairgrounds	Upgrade RV/Camper electrical hookups	N
6		R
7		
8		
9		
10		
11		
12		
13		
14		
15		
16		
17		
18		
19		
20		
21		
22		
23		
24		
25		
26		
27		
28		
29		
30		
31		
32		
33		
34		
35		
36		
37		
38		
39		
40		
41		
42		
43		





CITY OF JACKSON  
Capital Request FY 23-27

Justification

Department Name Jackson Fairgrounds Park  
Item Description Purchase 200 "Heavy Duty" 8ft. tables.

\_\_\_\_\_  
\_\_\_\_\_  
\_\_\_\_\_  
\_\_\_\_\_  
\_\_\_\_\_

Amount \$30,000.00

Justification The current number of Heavy-Duty 8ft. tables is getting less and less as each year passes. These tables are used for Flea Market, Gun/Knife Shows, and events with vendors that likely require heavier/more durable tables. The tables have been used for many years. We will need more by this time. We are unable to make repairs to them any longer.

\_\_\_\_\_  
\_\_\_\_\_  
\_\_\_\_\_  
\_\_\_\_\_  
\_\_\_\_\_  
\_\_\_\_\_  
\_\_\_\_\_  
\_\_\_\_\_





CITY OF JACKSON  
Capital Request FY 23-27

Justification

Department Name Jackson Fairgrounds Park  
Item Description Upgrade RV/Camper electrical hookups

---

---

---

---

---

---

---

---

Amount \$100,000.00

Justification The current electrical infrastructure will need to be replaced and/or upgraded to better meet the needs of those events that carry a large volume Campers/RV's/Coaches. The electrical hookups/infrastructure/hardware will need to be upgraded for safety and efficiency for events such as The West Tennessee Dog Fanciers, Flea Markets, Gun & Knife Shows, Good Sams/Camping Clubs, and any other such events that carry that need.

---

---

---

---

---

---

---

---



CITY OF JACKSON  
Capital Request FY 23-27  
Justification

**Budget Year:** FY 23 **Item:** # 1

**Department Name:** Fire Department – Operations (315-42220-900)

**Item Description:** Supply intake valves for firefighting water supply.

**Amount:**  
TFT Low Profile Ball Intake Valves total price \$16,080 (FY23)

**Justification:**  
The supply hose valves will replace aging equipment that are in need of replacement.

CITY OF JACKSON  
Capital Request FY 23-27  
Justification

**Budget Year:** FY 23

**Item:** # 2

**Department Name:** Fire Department – Operations (315-42220-900)

**Item Description:** 4-inch supply hose

**Amount:**

50 sections of 4-inch Rubber Fire Hose \$34,367.00 (FY23)

**Justification:**

The new supply hose will replace aging hoses that have exceeded their life expectancy. The 4” hose is used to transport water from the fire hydrant to the fire engine. The replacement of hoses is essential to our mission of mitigating fire.

CITY OF JACKSON  
Capital Request FY 23-27  
Justification

**Budget Year:** FY23

**Item:** # 3

**Department Name:** Fire Department – Operations (315-42220-900)

**Item Description:** Replacement fire hose 1.75 inch fire hose.

**Amount:**

30 sections 1.75 inch Double Jacket Fire Hose \$6209.00

**Justification:**

The new hose will replace aging hoses that are in need of replacement. The 1.75” hose is used for actual firefighting. The replacement of hoses is essential to our mission of mitigating fire.

CITY OF JACKSON  
Capital Request FY 23-27  
Justification

**Budget Year:** FY23

**Item:** # 4

**Department Name:** Fire Department – Operations (315-42220-900)

**Item Description:** Replacement fire hose 2.5 inch fire hose

**Amount:**

20 sections 2.5 inch Double Jacket Fire Hose \$5,000.00

**Justification:**

The new hose will replace aging hoses that are in need of replacement. The 2.5” hose is used for actual firefighting. The replacement of hoses is essential to our mission of mitigating fire.

CITY OF JACKSON

Capital Request FY 23-27

Justification

**Budget Year:** FY23

**Item:** # 5

**Department Name:** Fire Department – Operations (315-42220-900)

**Item Description:** (2) R 522 E3 Rams and batteries plus chargers.

The item is an electric driven hydraulic ram used to perform vehicle extrications.

**Amount:** \$19,775

**Justification:**

The two sets of the items will be placed on the current rescue trucks. One Ram will be placed on Engine 53 for the north district and one on Engine 12 for the south district. These tools will be used to replace the current Ram tools that are well past manufacturer recommended replacement dates. The Department has many uses for the equipment but the main use is to help free an accident victim pinned in a vehicle. The Ram is used to push metal and other objects away from a trapped victim.

CITY OF JACKSON  
Capital Request FY 23-27

Justification

**Budget Year:** FY23

**Item:** # 6

**Department Name:** Fire Department – Operations (315-42220-900)

**Item Description:** (3) Police Interceptor Ford Expedition, price to include purchase of vehicle, installation of emergency equipment and radios.

**Amount:** \$135,000

**Justification:**

The proposed request is to replace (2) two 2012 F-250 Pickup Trucks and (1) one 2003 F-350 medical response units. The replaced vehicles will be taken out of front line service and moved into the Training and Fire Prevention Divisions, this will help increase the life span of the older equipment. Moving forward the Department will focus on consistent utilization of Medical Response units in lieu of the utilizing the more expensive fire apparatus (engines & aerials). Utilization of designated EMS response vehicles will help reduce wear and tear on the new fire apparatus and allow the Department to keep more apparatus available for fire related needs.



CITY OF JACKSON

Capital Request FY 23-27

Justification

**Budget Year:** FY23

**Item:** # 7

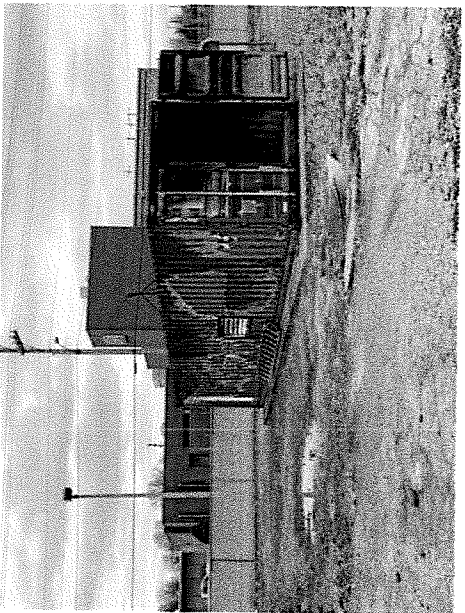
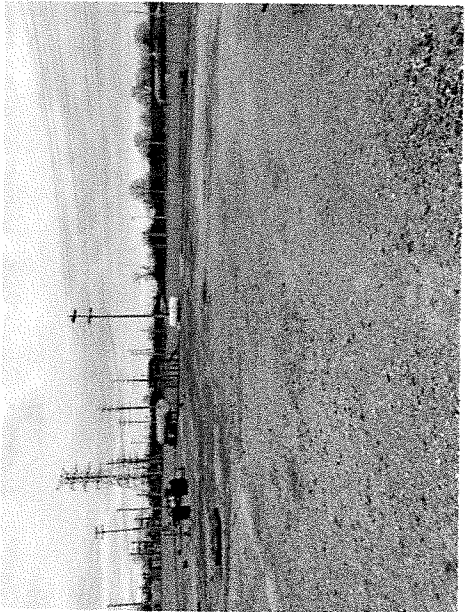
**Department Name:** Fire Department – Training (315-42240-900)

**Item Description:** Rework Department Training Field

**Amount:** \$25,000

**Justification:**

The proposed request will be used to add gravel and several Conex Boxes (large metal boxes) to the training field located behind the Administration Building at 720 S. Highland. The current walking surface consists of old gravel that is not level or consistent throughout the field. Additional gravel will provide a semi-smooth walking and operating surface for Firefighters as they conduct outdoor live (actual fire) training scenarios. The conex boxes are used to conduct enclosed live fire training scenarios. The boxes provide an enclosure in which firefighters can experience actual fire conditions (heat/smoke) and experience fire behavior in a controlled environment. Currently the Department only has one conex box therefore it is difficult to create expand scenarios.



CITY OF JACKSON

Capital Request FY 23-27

Justification

**Budget Year:** FY23

**Item:** # 8

**Department Name:** Fire Department – Operations (315-42220-900)

**Item Description:** Replace outdated thermal imaging cameras

**Amount:** \$78,000

**Justification:**

Thermal Cameras are located on each fire apparatus. A thermal camera allows firefighters to see in smoke filled environments. Having the ability to see through smoke helps firefighters monitor rapidly changing fire conditions, locate trapped victims and find hidden hot spot fires quickly. The proposed request will replace outdated thermal imaging cameras. Currently our cameras consist of various makes, models and outdated technology. It has become difficult to find replacement parts, batteries and chargers. The replacement of all thermal cameras will improve firefighter and occupant safety. We are continuing to seek alternative funding via grants but we have no funding guarantees at time of capital budget submission.

CITY OF JACKSON

Capital Request FY 23-27

Justification

**Budget Year:** FY23

**Item:** # 9

**Department Name:** Fire Department – Buildings (315-42254-900)

**Item Description:** Station 1,2,4 Repairs and Upgrades

**Amount:** \$300,000

**Justification:**

Fire Station #1 (Downtown) was constructed in 1967 (55 years old) and houses 13 Firefighters. The Station is in need of basic updates to include paint, lighting, ceiling tile replacement, new engine bay doors (north side). The parking lot is deteriorating and has scattered large cracks and potholes. The glass contained within the engine bay doors (north side) is loose in areas and could become a safety issue if not addressed.

Fire Station #2 (Westwood Ave) was constructed in 1967 (55 years old) and houses 8 Firefighters. The Station is in need of basic updates to include paint, lighting, ceiling tile replacement, and general updates. Several cracks in the exterior walls have developed over the years along with foundation settling. Evaluation of the settling by a Professional Engineer has determined no immediate threat to the station.

Fire Station #4 (South Highland) was constructed in 1967 (55 years old) and houses 8 Firefighters. The Station is in need of basic updates to include paint, lighting, ceiling tile replacement, parking lot issues. A large underground cavity has been observed on the property along with major storm water drainage issues. The cavity and storm water drainage issue is currently being evaluated by Tom Winbush.

The \$300,000 request will allow the Department to begin addressing the most urgent needs at the three referenced stations. A practical versus financial spending evaluation of station needs will be a main consideration as our Station analysis continues over the next budget year.

CITY OF JACKSON  
Capital Request FY 23-27  
Justification

**Budget Year:** FY24

**Item:** # 10

**Department Name:** Fire Department – Operations

**Item Description:** Replacement 4 inch supply fire hose

**Amount:**  
10 sections of 4 inch Rubber Fire Hose \$6874.00

**Justification:**

The supply hose will replace aging hoses that are in need of replacement. The 4" hose is used to transport water from the fire hydrant to the fire engine.

CITY OF JACKSON  
Capital Request FY 23-27

Justification

**Budget Year:** FY24

**Item:** # 11

**Department Name:** Fire Department – Operations (315-42220-900)

**Item Description:** Replacement fire hose 2.5 inch fire hose

**Amount:** 20 sections 2.5 inch Double Jacket Fire Hose \$5,000.00

**Justification:**

The new hose will replace aging hoses that are in need of replacement. The 2.5" hose is used for actual firefighting. The replacement of hoses is essential to our mission of mitigating fire.

CITY OF JACKSON  
Capital Request FY 23-27  
Justification

**Budget Year:** FY24

**Item:** # 12

**Department Name:** Fire Department – Operations (315-42220-900)

**Item Description:** Replacement fire hose 1.75 inch fire hose.

**Amount:** 30 sections 1.75 inch Double Jacket Fire Hose \$6209.00

**Justification:**

The new hose will replace aging hoses that are in need of replacement. The 1.75" hose is used for actual firefighting. The replacement of hoses is essential to our mission of mitigating fire.

CITY OF JACKSON  
Capital Request FY 23-27  
Justification

**Budget Year:** FY24

**Item:** # 13

**Department Name:** Fire Department – Operations (315-42220-900)

**Item Description:** Combination cutter/spreader (E-Tool) forcible entry tool.

**Amount:** \$15,341

**Justification:**

This a very effective versatile tool that can take the place of many hand tools. Not only will it do the job faster allowing our crews a better chance to save lives, it will also do the job with a lot less chance of injury to the firefighter using the tool. This tool would be placed on our forcible entry/search and rescue companies.



CITY OF JACKSON

Capital Request FY 23-27

Justification

**Budget Year:** FY24

**Item:** # 14

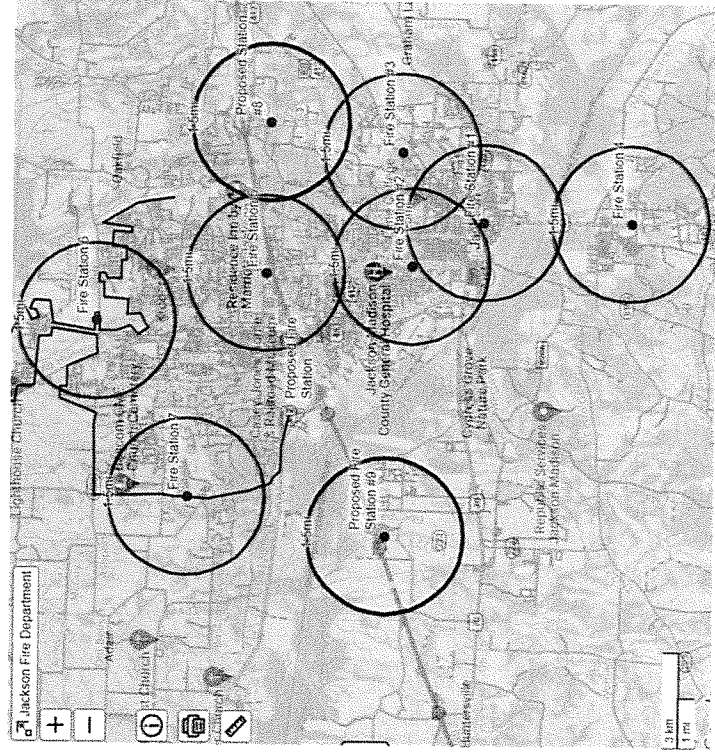
**Department Name:** Fire Department – Buildings (315-42254-900)

**Item Description:** New Fire Station #8 (Ball Park Area)

**Amount:** \$3,750,000

**Justification:**

The northeast area of the city has additional projected growth over the next few years. The area in question is provided fire protection from fire crews that respond from Station 3 and Station 5. Insurance Service Office (ISO) standards require a fire engine within 1.5 miles of a protected area. Currently the ballpark area is beyond the 1.5 mile radius. The construction of a new fire station will satisfy ISO requirements and provide fire units with a quicker response times. Jackson Fire can provide protection with existing equipment and staff.



CITY OF JACKSON  
Capital Request FY 23-27  
Justification

**Budget Year:** FY24

**Item:** # 15

**Department Name:** Fire Department – Buildings (315-42254-900)

**Item Description:** Replace Furniture At Fire Stations

**Amount:** \$30,000

**Justification:**

Firefighters remain at the Station 24 hours per day, 365 days a year. The constant 24-hour use of furniture and bedding takes a toll on these items. Often, furniture and bedding replacement gets lost in the shuffle as the focus is geared towards the purchase of emergency equipment and vehicles. Comfortable furniture and bedding is essential to the wellbeing of firefighters while on duty. The Fire Department is conducting a replacement program to ensure firefighters have all the tools, equipment and commodities that are needed.

CITY OF JACKSON  
Capital Request FY 23-27

Justification

**Budget Year:** FY25

**Item:** # 16

**Department Name:** Fire Department – Operations (315-42220-900)

**Item Description:** 4-inch supply hose

**Amount:** 10 sections of 4-inch Rubber Fire Hose \$6,847.00 (FY23)

**Justification:**

The new supply hose will replace aging hoses that have exceeded their life expectancy. The 4" hose is used to transport water from the fire hydrant to the fire engine. The replacement of hoses is essential to our mission of mitigating fire.

CITY OF JACKSON

Capital Request FY 23-27

Justification

**Budget Year:** FY25

**Item:** # 17

**Department Name:** Fire Department – Operations (315-42220-900)

**Item Description:** Replacement fire hose 2.5 inch fire hose

**Amount:** 20 sections 2.5 inch Double Jacket Fire Hose \$5,000.00

**Justification:**

The new hose will replace aging hoses that are in need of replacement. The 2.5” hose is used for actual firefighting. The replacement of hoses is essential to our mission of mitigating fire.

CITY OF JACKSON

Capital Request FY 23-27

Justification

**Budget Year:** FY25

**Item:** # 18

**Department Name:** Fire Department – Operations (315-42220-900)

**Item Description:** Heavy Rescue Vehicle

**Amount:** \$950,000

**Justification:**

Fire Department currently utilizes several fire apparatus to house specialized equipment. Future plans are to consolidate all special equipment (extrication, haz mat, high angle) onto one piece of fire apparatus (heavy rescue). The consolidation will help to reduce redundant financial expenditures. For example; in lieu of buying two sets of heavy-duty extrication items for (Engine 12 and Engine 53) we will buy one set and keep on the heavy rescue, housed at a central location. The heavy rescue will be equipped with a light plant capable of lighting up a very large area and will have a cascade system, which will allow firefighters to fill air bottles while on scene of a fire. Currently we have no large light plant or mobile cascade system.

CITY OF JACKSON

Capital Request FY 23-27

Justification

**Budget Year:** FY25

**Item:** # 19

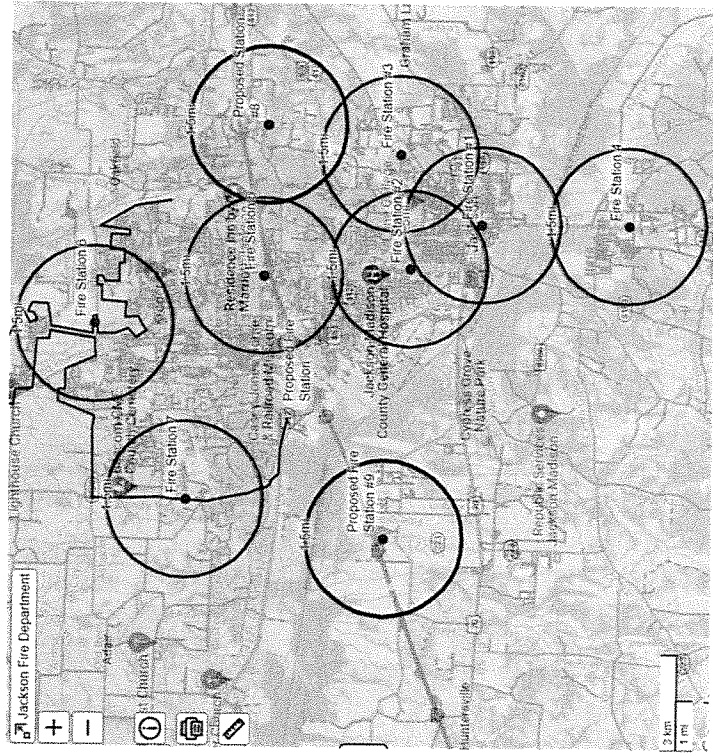
**Department Name:** Fire Department – Buildings (315-42254-900)

**Item Description:** New Fire Station #9 (West Industrial Park Area)

**Amount:** \$3,750,000

**Justification:**

The west industrial park has additional projected growth over the next few years. The area in question is provided fire protection from fire crews that respond from Station 1 and Station 5. Insurance Service Office (ISO) standards require a fire engine within 1.5 miles of a protected area. Currently the travel distance to the west industrial park is beyond the 1.5 mile radius. The construction of a new fire station will satisfy ISO requirements and provide fire units with a quicker response times. Jackson Fire can provide protection with existing equipment and staff.





CITY OF JACKSON  
Capital Request FY 23-27  
Justification

**Budget Year:** FY26

**Item:** # 20

**Department Name:** Fire Department – Operations (315-42220-900)

**Item Description:** Replacement fire hose 2.5 inch fire hose

**Amount:** (20) sections 2.5 inch Double Jacket Fire Hose \$5,000.00

**Justification:**

The new hose will replace aging hoses that are in need of replacement. The 2.5" hose is used for actual firefighting. The replacement of hoses is essential to our mission of mitigating fire.

CITY OF JACKSON  
Capital Request FY 23-27  
Justification

**Budget Year:** FY26

**Item:** # 21

**Department Name:** Fire Department – Administration (315-42210-900)

**Item Description:** Replace desks, bookshelves and interior furnishings.

**Amount:** \$30,000

**Justification:**

Update desks, tables and chairs for Administrative Staff and Battalion Chief Offices. Many of the desks and interior furnishings have been in service for over 20 years and have broken drawers, worn surfaces and are displaying obvious signs of wear and tear. Most Administrative staff members spend a great deal of time at their desks, updated desks and furnishings will help improve organization and the overall functionality of operations.

CITY OF JACKSON  
Capital Request FY 23-27

Justification

**Budget Year:** FY27

**Item:** # 22

**Department Name:** Fire Department – Fire Prevention (315-42230-900)

**Item Description:** (2) Pickup Trucks

**Amount:** \$80,000

**Justification:**

Replace aged units with IAAl compliance limiting carcinogen contaminants in vehicle separating truck cab from truck bed.

CITY OF JACKSON  
Capital Request FY 23-27

Justification

**Budget Year:** FY27

**Item:** # 23

**Department Name:** Fire Department – Fire Training (315-42240-900)

**Item Description:** (2) Pickup Trucks

**Amount:** \$80,000

**Justification:**

Replace aged units for Training Division.

CITY OF  
CAPITAL BUDGET

FY 23-FY27

	Department	Item	N = NEW R = REPLACEMENT
1	GDK		
2	GDK	John Deere 997 Mower	
3	GDK	Backhoe	R
4	GDK	Leaf Machine	R
5	GDK	Ford F-250	R
6	GDK	Pull-Behind Blower	R
7			R
8			
9			
10			
11			
12			
13			
14			
15			
16			
17			
18			
19			
20			
21			
22			
23			
24			
25			
26			
27			
28			
29			
30			
31			
32			
33			
34			
35			
36			
37			
38			
39			
40			
41			
42			
43			

CITY OF JACKSON  
Capital Request FY 23-27  
Justification

Department Name GDK \_\_\_\_\_  
Item Description John Deere 997 Mower \_\_\_\_\_  
\_\_\_\_\_  
\_\_\_\_\_  
\_\_\_\_\_  
\_\_\_\_\_  
\_\_\_\_\_  
Amount \$19,000 \_\_\_\_\_

Justification We need to constantly update our fleet to replace mowers that are getting worn due to heavy daily use. It gets to be where it is more cost effective to replace them than to keep repairing them. \_\_\_\_\_  
\_\_\_\_\_  
\_\_\_\_\_  
\_\_\_\_\_  
\_\_\_\_\_  
\_\_\_\_\_  
\_\_\_\_\_  
\_\_\_\_\_

CITY OF JACKSON  
Capital Request FY 23-27

Justification

Department Name	GDK
Item Description	Backhoe
Amount	\$70,000
Justification	The current one has numerous problems. The four-wheel drive doesn't work, it leaks hydraulic fluid constantly, the bucket sticks, the transmission slips, and it won't go into high gear.

CITY OF JACKSON  
Capital Request FY 23-27  
Justification

Department Name    GDK \_\_\_\_\_  
Item Description    Leaf Machine \_\_\_\_\_  
\_\_\_\_\_  
\_\_\_\_\_  
\_\_\_\_\_  
\_\_\_\_\_  
\_\_\_\_\_  
\_\_\_\_\_  
Amount    \$50,000 \_\_\_\_\_

Justification    We need to start replacing some of the older models that we have.  
This year we had more at the garage than we had on the yard several times. This puts  
us down from working and we get behind. This is a major customer service issue. \_\_\_\_\_  
\_\_\_\_\_  
\_\_\_\_\_  
\_\_\_\_\_  
\_\_\_\_\_  
\_\_\_\_\_  
\_\_\_\_\_  
\_\_\_\_\_



CITY OF JACKSON  
Capital Request FY 23-27

Justification

Department Name	GDK
Item Description	Ford F-250
Amount	\$27,000
Justification	We need to replace older models. Our trucks are hand-me-downs of hand-me-downs. Some are on their last leg. The trucks that came over with the Health and Sanitation guys aren't big enough to pull our large trailers with 2 commercial mowers.

CITY OF JACKSON  
Capital Request FY 23-27  
Justification

Department Name GDK \_\_\_\_\_  
Item Description Pull-Behind Blower  
\_\_\_\_\_  
\_\_\_\_\_  
\_\_\_\_\_  
\_\_\_\_\_  
\_\_\_\_\_  
\_\_\_\_\_  
Amount \$6,000 \_\_\_\_\_

Justification We use this to clear roads and large areas in parks. The golf course kept our current one there and it is beyond repair. We had to fix it every time we got it back including putting a new motor on it. By this point it is too cost prohibitive to fix.  
\_\_\_\_\_  
\_\_\_\_\_  
\_\_\_\_\_  
\_\_\_\_\_  
\_\_\_\_\_  
\_\_\_\_\_  
\_\_\_\_\_  
\_\_\_\_\_

CITY OF JACKSON  
CAPITAL BUDGET REQUEST SUMMARY

FY 23-FY27  
GARAGE

Item	N = NEW	R = REPLACEMENT	FY22 CARRY OVER	FY23	FY24	FY25	FY26	FY27	Totals
ACE PARKING LOT									
I CAPACITY WHEEL BALANCER W/LIFT	N			250,000					
TRUCK	R					13,600			
ALIGNMENT RACK W COMPUTERIZED ALIGNMENT SYSTEM	N					35,000.00			
E/POLICE LAPTOP COMPUTER W/SOFTWARE	R				35,000.00				
IUNCEY ROTARY SCREW AIR COMPRESSOR	R						5,000.00		
								8,000.00	

CITY OF JACKSON  
Capital Request FY 23-27

Justification

Department Name       GARAGE      

Item Description       #1. RESURFACE PARKING LOT      

\_\_\_\_\_

\_\_\_\_\_

\_\_\_\_\_

\_\_\_\_\_

\_\_\_\_\_

\_\_\_\_\_

Amount       \$250,000.00      

Justification       ENTIRE PARKING LOT HAS DETERIORATED AND HAS MANY  
LARGE HOLES      

\_\_\_\_\_

\_\_\_\_\_

\_\_\_\_\_

\_\_\_\_\_

\_\_\_\_\_

\_\_\_\_\_

\_\_\_\_\_

CITY OF JACKSON  
Capital Request FY 23-27  
Justification

Department Name GARAGE  
Item Description 2 HIGH CAPACITY WHEEL BALANCER WITH LIFT

\_\_\_\_\_  
\_\_\_\_\_  
\_\_\_\_\_  
\_\_\_\_\_

Amount \$13,600.00

Justification WE CURRENTLY HAVE A SMALL WHEEL BALANCER FOR POLICE AND SMALL EQUIPMENT BUT WE NEED ONE FOR LARGER TRUCKS WITH A LIFT WHICH HAS THE POTENTIAL TO REDUCE WORKFORCE INJURIES. ALSO, BALANCING ALL TIRES WILL INCREASE THE LONGEVITY OF THE TIRES

\_\_\_\_\_  
\_\_\_\_\_  
\_\_\_\_\_  
\_\_\_\_\_  
\_\_\_\_\_  
\_\_\_\_\_  
\_\_\_\_\_  
\_\_\_\_\_  
\_\_\_\_\_

CITY OF JACKSON  
Capital Request FY 23-27  
Justification

Department Name GARAGE  
Item Description #3. SERVICE TRUCK  
  
  
  
  
  
  
Amount \$35,000  
Justification NEED TO REPLACE 20 YEAR OLD SERVICE TRUCK

CITY OF JACKSON  
Capital Request FY 23-27  
Justification

Department Name GARAGE  
Item Description #4 RACK WITH COMPUTERIZED ALIGNMENT SYSTEM  
\_\_\_\_\_  
\_\_\_\_\_  
\_\_\_\_\_  
\_\_\_\_\_  
\_\_\_\_\_  
\_\_\_\_\_  
\_\_\_\_\_  
Amount \$35,000  
Justification WE CURRENTLY SEND ALL ALIGNMENTS OUT OF HOUSE  
WHICH RESULTS IN DOWNTIME AND EXTRA EXPENSE FOR TWO EMPLOYEES  
TO PICK UP AND DELIVER VEHICLE. ALIGNMENTS INCREASE TIRE LIFE BY 20%  
\_\_\_\_\_  
\_\_\_\_\_  
\_\_\_\_\_  
\_\_\_\_\_  
\_\_\_\_\_  
\_\_\_\_\_  
\_\_\_\_\_  
\_\_\_\_\_





CITY OF JACKSON  
Capital Request FY 23-27  
Justification

Department Name GARAGE

Item Description #6 AIR COMPRESSOR FOR GARAGE

\_\_\_\_\_  
\_\_\_\_\_  
\_\_\_\_\_  
\_\_\_\_\_  
\_\_\_\_\_  
\_\_\_\_\_

Amount \$8,000.00

Justification OUR CURRENT AIR COMPRESSOR WAS INSTALLED WHEN  
BUILDING WAS BUILT. IN 2027 THIS COMPRESSOR WILL BE OVER 22 YEARS  
OLD  
\_\_\_\_\_  
\_\_\_\_\_  
\_\_\_\_\_  
\_\_\_\_\_  
\_\_\_\_\_  
\_\_\_\_\_  
\_\_\_\_\_













**CITY OF JACKSON  
FY 23 - FY 27  
CAPITAL BUDGET REQUEST SUMMARY**

Department	Item	N = NEW	R = REPLACEMENT	FY23	FY24	FY25	FY26	FY27	Totals
1 H&S	Ford F250 w/ small dump bed	R		60,000					60,000
2 H&S	(2) - 30 yard roll-off bins	N		14,000					14,000
3 H&S	Knuckleboom Loader (Claw Truck)	N			180,000				180,000
4 H&S	Knuckleboom Loader (Claw Truck)	R				180,000			180,000
5 H&S	Knuckleboom Loader (Claw Truck)	R					180,000		180,000
6 H&S	Ford F450 w/ grain bed	R					180,000	65,000	180,000
7									65,000
8									
9									
10									
11									
12									
13									
14									
15									
16									
17									
18									
19									
20									
21									
22									
23									
24									
25									
26									
27									
28									
29									
30									
31									
32									
33									
34									
35									
36									
37									
38									
39									
40									
41									
42									
43									





CITY OF JACKSON

Capital Request FY 23-27

Justification

Department Name Health & Sanitation  
Item Description 30 yard Roll-off containers (2) / FY23

---

---

---

---

---

---

---

---

Amount \$14,000 (\$7,000 each)

Justification New- These containers will be used to haul bulk waste to the landfill. They will be placed in the district where the claw trucks are servicing, allowing operators to dump loads into the containers, instead of making several trips to the landfill. This improves efficiency by minimizing travel time to the landfill and cuts back fleet grounding from damages to the trucks caused by the dumping conditions at the landfill. These containers hold approximately two (2) claw truck loads and will be dumped as filled.

---

---

---

---

---

---

---

---

---

---

CITY OF JACKSON

Capital Request FY 23-27

Justification

Department Name Health & Sanitation  
Item Description Knuckleboom Loader (Claw Truck) / FY24

---

---

---

---

---

---

---

Amount \$180,000

Justification New- This will be used as a recovery truck. At times, we have trucks down and operators do not have another truck to continue operations. The operator will service special requests from other departments, non-compliant piles that have to be removed immediately, and a back-up truck for grounded trucks being repaired or pm'd at the Garage. This will help maintain the scheduled services throughout the City.

---

---

---

---

---

---

---

---

---

---

---

---







CITY OF JACKSON  
CAPITAL BUDGET REQUEST SUMMARY

FY 23-FY27

Department	Item	N = NEW R = REPLACEMENT	FY22 CARRY OVER	FY23	FY24	FY25	FY26	FY27	Totals	
Information Technology	Windows Server Replacement Hardware	R		\$100,000.00	\$100,000.00		\$100,000.00		\$200,000.00	1
Information Technology	150 Replacement PC Setups / Office Licenses	R		\$300,000.00	\$300,000.00	\$300,000.00	\$300,000.00	\$300,000.00	\$900,000.00	2
Information Technology	Replacement Network Equipment	R		\$50,000.00	\$50,000.00	\$50,000.00	\$50,000.00	\$50,000.00	\$250,000.00	3
Information Technology	Additional Network Storage Appliances for PD	N						\$550,000.00	\$550,000.00	4
Information Technology	Fiber Optic OTDR Meter	N		\$50,000.00					\$50,000.00	5
Information Technology	Replacement IT Vehicle	R						\$45,000.00	\$45,000.00	6
Information Technology	Replacement of Fiber Optic Infrastructure	R						\$200,000.00	\$200,000.00	7
									\$2,195,000.00	8
									\$0.00	9
									\$0.00	10
									\$0.00	11
									\$0.00	12
									\$0.00	13
									\$0.00	14
									\$0.00	15
									\$0.00	16
									\$0.00	17
									\$0.00	18
									\$0.00	19
									\$0.00	20
									\$0.00	21
									\$0.00	22
									\$0.00	23
									\$0.00	24
									\$0.00	25
									\$0.00	26
									\$0.00	27
									\$0.00	28
									\$0.00	29
									\$0.00	30
									\$0.00	31
									\$0.00	32
									\$0.00	33
									\$0.00	34
									\$0.00	35
									\$0.00	36
									\$0.00	37
									\$0.00	38
									\$0.00	39
									\$0.00	40
									\$0.00	41
									\$0.00	42
									\$0.00	43

CITY OF JACKSON  
Capital Request FY 23-27

Justification

Department Name Information Technology  
Item Description **Windows Server Replacement Hardware**

This would replace the oldest Virtual Host Server with a new server, which would host current VMs and further consolidate our hardware footprint. The plan is to replace the aging hardware in Fiscal Year 2024 and 2026 to keep our servers current.

\_\_\_\_\_  
\_\_\_\_\_  
\_\_\_\_\_

Amount **\$100,000 FY24 | \$100,000 FY26**

Justification Our oldest virtual host server is no longer under coverage and the OS will be end of life. This will allow us to ensure that critical infrastructure is able to receive security patches and we able to continue to support technology initiatives.

\_\_\_\_\_  
\_\_\_\_\_  
\_\_\_\_\_  
\_\_\_\_\_  
\_\_\_\_\_  
\_\_\_\_\_  
\_\_\_\_\_





CITY OF JACKSON  
Capital Request FY 23-27

Justification

Department Name Information Technology  
Item Description **Replacement Network Equipment**

This would replace the network switches that were not included in the ARPA core infrastructure upgrade. This would provide roughly enough to purchase 5-6 switches including 5 years of coverage and support paid up-front..

\_\_\_\_\_  
\_\_\_\_\_  
\_\_\_\_\_

Amount **\$50,000 FY23, FY24, FY25, FY26, FY27**

Justification This would replace the network switches at the Civic Center, Police Annex, Fire Administration, Fire Stations 1-7, SWAT Unit, The Ned, City Garage, Street Sign Department, City Garage, Impound Lot, Sportsplex Main Pavilion, and the Sportsplex Maintenance Shop It would also update the layer 3 devices at Fire Stations 2-7, Safe Hope Center, Airport, TR White, Tennis Center, Farmer's Market, Municipal Maint, Animal Shelter, Fairgrounds, Traffic Signalization, PD North Precinct, Westwood Community Center, South Jackson Community Center.

\_\_\_\_\_  
\_\_\_\_\_  
\_\_\_\_\_  
\_\_\_\_\_









**CITY OF JACKSON  
CAPITAL BUDGET REQUEST SUMMARY**

FY 23-FY27

110-44642 Jackson Tennis Com	Department	Item	R = NEW R = REPLACEMENT	FY22 CARRY OVER	FY23	FY24	FY25	FY26	FY27	Totals
1		Resurface 10 outdoor courts	R		\$55,000				60,000	105,000
2										
3										
4										
5										
6										
7										
8										
9										
10										
11										
12										
13										
14										
15										
16										
17										
18										
19										
20										
21										
22										
23										
24										
25										
26										
27										
28										
29										
30										
31										
32										
33										
34										
35										
36										
37										
38										
39										
40										
41										
42										
43										

CITY OF JACKSON  
Capital Request FY 23-27  
Justification

Department Name 110-44642 Jackson Tennis Complex

Item Description Resurface 10 outdoor courts  
\_\_\_\_\_  
\_\_\_\_\_  
\_\_\_\_\_  
\_\_\_\_\_  
\_\_\_\_\_  
\_\_\_\_\_

Amount \$55,000

Justification The 10 Courts at the JTC have a tremendous amount of play and are subject to extreme weather in Jackson. To maintain quality, textured playing surfaces, outdoor, post-tension concrete courts must have a new coating re-applied approximately every 4-5 years. The JTC is due for this regular maintenance  
\_\_\_\_\_  
\_\_\_\_\_  
\_\_\_\_\_  
\_\_\_\_\_  
\_\_\_\_\_  
\_\_\_\_\_  
\_\_\_\_\_



CITY OF JACKSON  
CAPITAL BUDGET REQUEST SUMMARY

FY 23-FY27

Department	Item	N = NEW	R = REPLACEMENT	FY22 CARRY OVER	FY23	FY24	FY25	FY26	FY27	Totals
1 Municipal Maint.	Material to build a equipment shed	N			\$30,000.00					
2 Municipal Maint.	Utility work truck	R			\$46,000.00					
3 Municipal Maint.	Materials to add more electric service to our main shop building.	N			\$10,000.00					
4 Municipal Maint.	Utility work truck	R				\$50,000.00				
5 Municipal Maint.	Utility work truck	R					\$55,000.00			
6 Municipal Maint.	Utility work truck	R						\$55,000.00		
7 Municipal Maint.	Utility work truck	R							\$60,000.00	
8										
9										
10										
11										
12										
13										
14										
15										
16										
17										
18										
19										
20										
21										
22										
23										
24										
25										
26										
27										
28										
29										
30										
31										
32										
33										
34										
35										
36										
37										
38										
39										
40										
41										
42										
43										

## Justification of Capital Budget Request FY23

Item / Description	Justification
1 new service truck	To replace an aging fleet as we have several trucks over 15 years old.
2Materials to build an equipment shed	We need a shed to store our equipment out of sight and the weather. Currently our equipment is in full view of the by- pass and we had a trailer and backhoe stolen. Storing it out of the weather will help protect it to last longer.
3Material to add more electric service to our main shop building.	We have acquired more shop equipment at no cost. We need to upgrade the electrical system to be able to use this equipment.
4	
5	
6	
7	
8	
9	

CITY OF JACKSON  
CAPITAL BUDGET REQUEST SUMMARY

FY 23-FY27

Department	Item	N = NEW R = REPLACEMENT	FY22 CARRY OVER	FY23	FY24	FY25	FY26	FY27	Totals
1 South Jackson Community Center	Level floors, install new flooring, core test	N		70,000.00					70,000
2 South Jackson Community Center	30 Banquet tables and 3 storage dollies	N			6500				6,500.00
3 South Jackson Community Center	Paint entire building inside and outside	N				6000			6,000.00
4 South Jackson Community Center	Kitchen appliances, range, refrigerator, dishwasher and cabinet doors & h.	R					7000		6,000.00
5 South Jackson Community Center	Update Overhead lights and fans in Main Recreation Room	R					8000		8,000.00
6 South Jackson Community Center	Metal Roof	R						20,000.00	20,000.00
7									
8									
9									
10									
11									
12									
13									
14									
15									
16									
17									
18									
19									
20									
21									
22									
23									
24									
25									
26									
27									
28									
29									
30									
31									
32									
33									
34									
35									
36									
37									
38									
39									
40									
41									
42									
43									



CITY OF JACKSON

Capital Request FY 23-27

Justification

Department Name South Jackson Community Center  
Item Description FY24 30 Banquet tables and 3 storage dollies

Replacement of old tables and dollies  
\_\_\_\_\_  
\_\_\_\_\_  
\_\_\_\_\_

Amount \$6500.00

Justification Current tables are approximately 20 years old and have cracks in edges, dinky from wear and tear, legs are wobbly and frames are becoming loose due to missing screws and not being able to tighten screws up due to holes becoming enlarged due to wear. Need to update long tables to round tables due to rental request.

\_\_\_\_\_  
\_\_\_\_\_  
\_\_\_\_\_  
\_\_\_\_\_  
\_\_\_\_\_  
\_\_\_\_\_  
\_\_\_\_\_  
\_\_\_\_\_

CITY OF JACKSON

Capital Request FY 23-27

Justification

Department Name South Jackson Community Center  
Item Description Fy 25 Paint entire building inside and outside

---

---

---

---

---

---

Amount \$6000

Justification Building has not been painted since being built in 1997 and could stand to have the color updated on outside, to include doors and all trim. Walls on inside need new paint, due to chips in paint, marks on wall and to just refresh the looks of the building

---

---

---

---

---

---

---

---

---

---

---

CITY OF JACKSON

Capital Request FY 23-27

Justification

Department Name South Jackson Community Center  
Item Description FY26 1. Replace kitchen appliances to include range, refrigerator, dishwasher and cabinet doors and hardware

2. Update overhead lights and fans in main Recreation Room  
\_\_\_\_\_  
\_\_\_\_\_  
\_\_\_\_\_

Amount Total \$15,000 \$7000 for kitchen and \$8000 for lights and fans  
Justification 1. Kitchen appliances are 15 -20 years old; range has already had heating elements replaced twice, portable dishwasher needs to be replace with a slide in dishwasher with new cabinet, a larger refrigerator is needed; Cabinets were roughly built in 97, doors and hardware need to be replaced at least. Hinges are becoming lose and doors and drawers need new locks. Drawers are falling apart and have been fixed several times.

2. Overhead lights need to be replaced with LED lights and current fans need to be replaced with larger ones to help with movement of air and heat for better heating efficiency.  
\_\_\_\_\_  
\_\_\_\_\_  
\_\_\_\_\_  
\_\_\_\_\_  
\_\_\_\_\_

CITY OF JACKSON  
Capital Request FY 23-27

Justification

Department Name    South Jackson Community Center  
Item Description    FY27 Replace Metal Roof

---

---

---

---

---

---

---

---

Amount    \$20,000

Justification    Roof is now 5 years out of warranty. While it is not showing signs of deteriorating today, it does pop when it is windy outside. By 2227, the roof will be 10 years out of warranty and could be showing signs that it needs to be replaced. This is a preventive measurements the City should be considering.

---

---

---

---

---

---

---

---



CITY OF JACKSON  
CAPITAL BUDGET REQUEST SUMMARY

FY 23-FY27

Department	Item	N = NEW R = REPLACEMENT	FY22 CARRY OVER	FY23	FY24	FY25	FY26	FY27	Totals
1 Sportsplex	Hoshizaki KM-1301SRJ Ice Machine Mounted on Existing Ice Bin	R	\$ 11,000.00	\$ -	\$ -	\$ -	\$ -	\$ -	\$ 11,000.00
2 Sportsplex	Scheduled Gator Replacement	R	\$ 53,000.00	\$ 43,000.00	\$ -	\$ -	\$ 25,000.00	\$ -	\$ 121,000.00
3 Sportsplex	John Deere 7400A Rough Cut Mower (Scheduled Mower Replacement)	R	\$ 46,000.00	\$ -	\$ -	\$ -	\$ -	\$ -	\$ 46,000.00
4 Sportsplex	Infield Groomer Replacement	R	\$ -	\$ 16,000.00	\$ -	\$ -	\$ -	\$ -	\$ 16,000.00
5 Sportsplex	Remaining Shade Structures after ARPA Project (if any)	N	?	\$ -	\$ -	\$ -	\$ -	\$ -	\$ 0
5 Sportsplex	Phased turfing of infields over 5 years	N	\$ 540,000.00	\$ 826,000.00	\$ 826,000.00	\$ 826,000.00	\$ 702,000.00	\$ 567,000.00	\$ 3,461,000.00
6 Sportsplex	Indoor Multi-Use Turf Facility	N		\$ 600,000.00					600000
7									0
8									0
9									0
10									0
11									0
12									0
13									0
14									0
15									0
16									0
17									0
18									0
19									0
20									0
21									0
22									0
23									0
24									0
25									0
26									0
27									0
28									0
29									0
30									0
31									0
32									0
33									0
34									0
35									0
36									0
37									0
38									0
39									0
40									0
41									0
42									0



CITY OF JACKSON

Capital Request FY 23-27

Justification

Department Name	Sportsplex
Item Description	Scheduled Gator Replacement

---

---

---

---

---

---

---

---

Amount    \$121,000 over 5 years (\$53,000 in FY 23)

Justification    The Sportsplex uses 8 John Deere Gators (2 of which are Pro Gators) for use on our 17 fields, use for setting up and maintaining our 5 concession stands during tournaments/events, use for setting up and maintaining our 2 gift shops, use for setting up and monitoring our 4 entry gates during tournaments/events, and use by custodial staff to ensure that our 70 acres and 10 restrooms are as clean at the end of a tournament as they are when we begin. We have a schedule as to when we would like to trade existing Gator's in while they have value. Our Grounds Crew takes great pride in all of our equipment and they maintain and clean these units often. Our staff is trained on how to properly operate and take care of these units in order to prolong their life, but just like anything mechanical, they need to be replaced from time to time and our goal is to be proactive in these replacements so that they can be budgeted and so that we don't have to act in an emergency as all of these units are critical to our operations.

---

---

---

---

CITY OF JACKSON  
Capital Request FY 23-27

Justification

Department Name	<u>Sportsplex</u>
Item Description	<u>John Deere 7400A RoughCut Mower (Scheduled Mower Replacement</u>
Amount	<u>\$46,000</u>
Justification	<u>The Sportsplex has had a fleet of 9 mowers to keep our 17 fields and 70 acres in pristine conditions year round. The mowers include 3 John Deere Reel Mowers that we use exclusively of the 17 fields, 2 Toro 3500 Ground Masters that mow a majority of the common areas, and 4 John Deere Zero Turns for all of the Nook and Crannies of the complex. With the addition of the John Deere 9009A from the ARPA funds, if we can add this 7400A, we will be able to more with less. This will be the last mower that we would need within the next 5 years barring any unforeseen mechanical failure. We would be able to phase out the Toro 3500s and a couple of the Zero Turns as the 9009 and the 7400 would be able to mow the entire commons areas in less time and less man power hours.</u>

CITY OF JACKSON  
Capital Request FY 23-27  
Justification

Department Name	<u>Sportsplex</u>
Item Description	<u>Scheduled Infield Groomer Replacement</u>
Amount	<u>\$16,000 in FY 24</u>
Justification	<u>This item was approved in the ARPA funds, but was cut by Sportsplex management in order to cover the increased cost on more critical needs in the ARPA approval. We will need to replace an infield groomer in the FY 24 budget in order to be proactive as both of our groomers are 2006 models with over 1800 hours on them</u>

CITY OF JACKSON

Capital Request FY 23-27

Justification

Department Name	<u>Sportsplex</u>
Item Description	<u>Remaining Shade Structures after ARPA Project (if any)</u>

Amount \$?

Justification The most exciting project to date for the Sportsplex is the Shade for the seating areas being supported by an approved ARPA Project. The budgeted \$\$ from ARPA was a number given in late 2020. We are in the process of getting specs for the project and then we will get bids. Our goal is to do all 17 fields, but will do as many fields as possible with the allocated \$306,000. If we have any fields remaining, I would like to have it in as a capital request for FY23 to finish the project, but will not know the cost nor how many fields remain until the bid process on the ARPA project is completed (Probably March, 2022). I will send a number as soon as I know.


CITY OF JACKSON  
Capital Request FY 23-27  
Justification

Department Name	<u>Sportsplex</u>
Item Description	<u>Phased Infield Turfing Project for all 17 Fields (over 5 years)</u>

Amount \$3,461,000 over 5 years (\$540,000 in FY23)

Justification The need for a transition from natural grass to artificial turf on the infields on all 17-fields has become a priority at The Sportsplex. Artificial Turf infields allows for our fields to be multi-use where we can play baseball and softball on the same fields on the same day (back-to-back games) where currently we only have 4 softball fields and have a max of 24ish softball teams for any one tournament. It also allows us to be more flexible and take more of the younger teams (7-10 year olds) which make more money and bring more people. Turf Infields allow us to eliminate virtually any weather related issues and will allow us to play more games on more days throughout the year. It will allow us to open more fields up to practice almost year round thus opening up a new revenue stream and new traffic to our complex during a previous dead time. More traffic to our complex, will also mean more traffic to the businesses located around The Sportsplex as well. As other area complexes are all going to this model it will continue to allow us to compete with them at the highest level for the same teams. This will also allow us to reduce labor cost greatly as field prep prior to and during tournaments are cut in half or up to ¾. I would love to do all 17 fields at one time, I understand the budgeting constraints of the City and doing several fields per year (spread throughout the complex in different age groups would work just fine. The 5-year Capital Plan has all 17-fields phased-in over 5 years. The more fields that are done at once, the less the cost due to the equipment that will be on site. In FY 23 I would like to do Fields 3, 4, & 5 gives us an immediate boost to be able to play more softball. It takes us from 4 fields to

up to potentially 7-fields at any one time. It also covers us weather wise in our 9-10 year olds which is one of our bigger age groups when it comes to number of teams and spectators. This overall project will also set us up to be a major player for World Series & Regional events once Great Wolf Lodge has opened creating a destination attraction. \*\*The turf will have to be replaced every 10 years or so, but it will be a fraction of the cost do to the initial cost including the drainage work and everything else that goes into the installation. \*\*\*The numbers are estimates from 2 years ago with an increase of 8%. We would bid the project out as a whole as well as per field so that we can make the most informed decisions on what fields and how many to do at a time.

---

---

---

---



CITY OF JACKSON  
Capital Request FY 23-27

Justification

Department Name	<u>Sportsplex</u>
Item Description	<u>Indoor Multi-Use Turf Facility</u>

Amount     \$600,000 in FY24

Justification     There is a great need for an indoor multi-use turf facility at The Sportsplex. We made a site visit to mTrade Park in Oxford, MS. mTrade has a great facility that was not very expensive to build in 2018 and has open a nice revenue stream for them. The facility is about 9,000 sq foot with 6 hitting lanes that can be raised and lowered allowing for indoor soccer or other practice & instruction to take place inside a climate controlled building on the turf. There is a raised observation area, concession stand, restrooms, and storage. The facility was fully heated and cooled and cost less than \$500,000 to construct. They rent out time to individuals, teams, instructors, coaches, birthday parties, etc.... It stays full especially in the winter. This will be a great new revenue stream as well as new traffic for our facility and our exit during a previously dead time. We would be able to get teams to the complex even in the rain to hit then patronize businesses around us and be ready to play as soon as the weather passes. With proper maintenance, this building will last as long as the complex itself. This also looks to the future as Great Wolf Lodge opens and sits The Sportsplex on a different level from our competitors as we complete the facelift of the complex with shade, turf, and an indoor facility. \*\*The estimated cost is what it was in 2018 plus a buffer of \$100,000. If approved if we had to cut some items and adjust to, we could do that after bid to see what real costs would be today.

CITY OF JACKSON  
CAPITAL BUDGET REQUEST SUMMARY

EX 23-PV27

Department	Item	N = New	R = Replacement	FY22 Carry Over	FY23	FY24	FY25	FY26	FY27	Totals
1 Street dept	SLOPE MOVER 72 554-TIPE CUTTER				68000					68000
2 Street dept	generator				14000					14000
3 Street dept	Ford F-150 4wd				36204					36204
4 Street dept	Ford F-150 4wd				36204					36204
5 Street dept	INTERSTATE HAD 3240 26 FLAT TRAILER				36204					36204
6 Street dept	Freightliner 108sd single axle				20000					20000
7 Street dept	40" milling head				115000					115000
8 Street dept	1770 Bobcat compact track loader				67000					67000
9 Street dept	6X12 CARGO TRAILER CONSTRUCTION CREW				29000					29000
10 Street dept	Ford F-150 4wd				5700					5700
11 Street dept	Ford F-250 4wd				37000					37000
12 Street dept	John Deere pull behind Interstate crew tractor				47000					47000
13 Street dept	John Crosswind Street Sweeper				260000		110000			370000
14 Street dept	Ford F250 pull truck				48000					48000
15 Street dept	Tandem truck with wet pack				165000					165000
16 Street dept	Side cutter tractor John Deere				114000					114000
17 Street dept	Ford F350 beam truck				53000					53000
18 Street dept	John Crosswind Street Sweeper				263000					263000
19 Street dept	Ford flat bed truck				53000					53000
20										
21										
22	Total				549408	344700	211000	114000	318000	1531108
23										
24										
25										
26										
27										
28										
29										
30										
31										
32										
33										
34										
35										
36										
37										
38										
39										
40										
41										
42										
43										

**CITY OF JACKSON**  
**Capital Request FY 23-27**  
**Justification**

Department Name	Street Dept
Item Description	Capital Budget five Years 23-27
Amount	
Justification	1 Slope mower is a 2004 it should be replace per garage.2. Gator is needed to help in our everyday function on spraying litter and weed eating in the city.3.and 4 are replacement trucks the other trucks are costly and not dependable one has 230000 miles the other one has 245000.5.the old trailer has a bent frame and is not safe to pull equipment. 6 replacement of the old one its 25 years old. 7 and 8 both work together this would help the city save money on streets while digging out and replacing street asphalt. 10. . This trailer would save our equipment from the weather and time loading and unloading each day 11. Replace the old truck that we have 2007 chev with a 189000 miles . 12. This is needed for the interstate would save a lots of time mowing.13.Elgin sweeper to replace the old sweeper that should have been replaced 2 years ago the old is still out of service.14 Replacement 15 Replacement of the old one 25 years old with mileage of 209000.16.Replacement mower hard to get parts for repairs 15 years old.17 Replacement of the old truck. 18. Replace the old sweeper.18 Replace the old flat bed truck 28 years old.

**Summary of Capital Budget Requested**

T. R. WHITE SPORTSPLEX

315-444-21-900

TERRY SMITH

*Department Name*

*Department Number*

*Director*

Item	Description	New or Replacement	Useful Life	Requested Month To Purchase	Requested Capital Amount					Total Five Year Request
					FY23	FY24	FY25	FY26	FY27	
1	POOL HOLDING TANK	REPLACEMENTS	10 YRS +		\$30,000					\$30,000
2	REFURBISH SWIMMING POOL SURFACE	REPLACEMENTS	10+		\$300,000					\$300,000
3	RESEAL/ STRIPE SOUTH PARKING LOT	REPLACEMENTS	10+		\$10,000					\$10,000
4	SAND REFINISH GYM FLOOR/ TRW, WW	REPLACEMENTS	2 YRS +		\$7,000					\$7,000
5	REPLACE PLYGROUND EQUIPMENT	REPLACEMENTS	10+		\$40,000					\$40,000
6	GYM LIGHTS	REPLACEMENTS	10 YRS +		\$7,000					\$7,000
7	FLOOR TILES AND BASE BORDERS	REPLACEMENTS	7 YRS+				\$7,000			\$7,000
8	LOBBY, OFFICE/WEIGHT-FITNESS LIGHTS	REPLACEMENTS	10 YRS+					\$22,000		\$22,000
9	REPAINT BUILDING EXTERIOR	REPLACEMENTS	10 YRS +		\$20,000					\$20,000
10	FITNESS ROOM EQUIPMENT	REPLACEMENTS	15 YRS		\$23,500					\$23,500
11										\$0
12										\$0
13										\$0
14										\$0
15										\$0
16										\$0
17										\$0
18										\$0
					\$340,000	\$47,000	\$7,000	\$22,000	\$55,500	\$471,500

*Justification Form Shows \$23,000*

*Justification Form Shows \$50,000*

CITY OF JACKSON  
CAPITAL BUDGET REQUEST SUMMARY

FY 23-FY27

Department	Item	N = NEW R = REPLACEMENT	FY22 CARRY OVER	FY23	FY24	FY25	FY26	FY27	Totals
1 T. R. WHITE SPORTSPLEX	POOL HOLDING TANK	R		\$30,000					\$30,000
2 T. R. WHITE SPORTSPLEX	POOL REFURBISH-REFINISH SURFACE	R		\$300,000					\$300,000
3 T. R. WHITE SPORTSPLEX	RESEAL AND STRIPE SOUTH PARKING LOT	R		\$10,000					\$10,000
4 T. R. WHITE SPORTSPLEX	SAND REFINISH GYM FLOOR/ TRW, WW	R		\$7,000					\$7,000
5 T. R. WHITE SPORTSPLEX	REPLACE PLAYGROUND EQUIPMENT	R		\$40,000					\$40,000
6 T. R. WHITE SPORTSPLEX	GYM LIGHTS	R				\$7,000			\$7,000
7 T. R. WHITE SPORTSPLEX	FLOOR TILES AND BASE BORDERS	R					\$22,000		\$22,000
8 T. R. WHITE SPORTSPLEX	LOBBY, OFFICE/WEIGHT-FITNESS LIGHTS	R						\$12,000	\$12,000
9 T. R. WHITE SPORTSPLEX	REPAINT BUILDING EXTERIOR	R						\$20,000	\$20,000
10 T. R. WHITE SPORTSPLEX	FITNESS ROOM EQUIPMENT	R						\$23,500	\$23,500
11									\$0
12									\$0
13									\$0
14									\$0
15									\$0
16									\$0
17									\$0
18									\$0
19									\$0
20									\$0
21									\$0
22									\$0
23									\$0
24									\$0
25									\$0
26									\$0
27									\$0
28									\$0
29									\$0
30									\$0
31									\$0
32									\$0
33									\$0
34									\$0
35									\$0
36									\$0
37									\$0
38									\$0
39									\$0
40									\$0
41									\$0
42									\$0
43									\$0



CITY OF JACKSON

Capital Request FY 23-27

Justification

Department Name I. R. WHITE SPORTSPLEX 110-44421-900

Item Description I. R. WHITE POOL

---

---

---

---

---

---

---

---

Amount \$300,000

Justification I R WHITE POOL IS 30 PLUS YEARS OLD NEED TO HAVE  
REFINISHING WORK AND MAJOR CONCRETE DEBT WORK AND PUMPROOM  
WORK.

---

---

---

---

---

---

---

---

---

---

---

---











CITY OF JACKSON

Capital Request FY 23-27

Justification

Department Name T. R. WHITE SPORTSPLEX  
Item Description FLOOR TILES AND BASE BORDERS

\_\_\_\_\_  
\_\_\_\_\_  
\_\_\_\_\_  
\_\_\_\_\_

Amount \$22,000

Justification REPLACE NECESSARY FLOOR TILES- THOSE CRACKING AND  
BROKEN DUE TO WEAR AND TEAR OVER THE YEARS. REPLACE BORDERS  
WHERE TILES MEET WALLS.

\_\_\_\_\_  
\_\_\_\_\_  
\_\_\_\_\_  
\_\_\_\_\_  
\_\_\_\_\_  
\_\_\_\_\_  
\_\_\_\_\_







**CITY OF JACKSON  
CAPITAL BUDGET REQUEST SUMMARY  
FY 23-FY27**

Department	Item	N = NEW	R = REPLACEMENT	FY22 CARRY OVER	FY23	FY24	FY25	FY26	FY27	Totals
110-4422 WW Rec Center	Paint exterior building	R			36,000					36,000
110-4422 WW Rec Center	Elliptical Fitness machine	N								
110-4422 WW Rec Center	Overlay parking lot and stripe	R			6,500					
110-4422 WW Rec Center	Replace carpet in center offices/rooms	R			100,000					
110-4422 WW Rec Center	Replace carpet in center offices/rooms	R					16,000			
110-4422 WW Rec Center	Repair WW Rec pool	R						200,000		
7										
8										
9										
10										
11										
12										
13										
14										
15										
16										
17										
18										
19										
20										
21										
22										
23										
24										
25										
26										
27										
28										
29										
30										
31										
32										
33										
34										
35										
36										
37										
38										
39										
40										
41										
42										
43										



CITY OF JACKSON  
Capital Request FY 23-27  
Justification

Department Name 110-44422 WW Rec Center

Item Description Paint WW Rec center exterior

\_\_\_\_\_  
\_\_\_\_\_  
\_\_\_\_\_  
\_\_\_\_\_  
\_\_\_\_\_  
\_\_\_\_\_

Amount \$36,000

Justification WW Rec Center's exterior has not been painted since we moved in during the 90's. The old color is showing through in many areas, and around the metal of the gym. There is staining around the building and is an generally unattractive.  
\_\_\_\_\_  
\_\_\_\_\_  
\_\_\_\_\_  
\_\_\_\_\_  
\_\_\_\_\_  
\_\_\_\_\_  
\_\_\_\_\_  
\_\_\_\_\_

110-4442CITY OF JACKSON

Capital Request FY 23-27

Justification

Department Name 110-44422 WW Rec Center

Item Description Elliptical Fitness Machine

\_\_\_\_\_  
\_\_\_\_\_  
\_\_\_\_\_  
\_\_\_\_\_  
\_\_\_\_\_  
\_\_\_\_\_

Amount \$6500

Justification WW Rec has a fitness room with treadmills, exercise bikes, universal gym, etc. Over the years, we have had requests to add an elliptical machine by many users.

\_\_\_\_\_  
\_\_\_\_\_  
\_\_\_\_\_  
\_\_\_\_\_  
\_\_\_\_\_  
\_\_\_\_\_  
\_\_\_\_\_





CITY OF JACKSON

Capital Request FY 23-27

Justification

Department Name 110-44422 WW Rec Center

Item Description Repair WW pool

\_\_\_\_\_  
\_\_\_\_\_  
\_\_\_\_\_  
\_\_\_\_\_  
\_\_\_\_\_  
\_\_\_\_\_

Amount \$200,000

Justification WW pool has major underground leaking in both the main line and one side of the return lines. The water fill faucet must be on continuously to keep the pool full enough to be operational which causes high water bills during the summer pool season. Also, additional chemicals must be added because the water is constantly being diluted in order to be safe for public swimming. I can continue to patch, however, the leaks will continue to worsen, and at some point in the near future will have to be addressed.

\_\_\_\_\_  
\_\_\_\_\_  
\_\_\_\_\_  
\_\_\_\_\_  
\_\_\_\_\_  
\_\_\_\_\_



CITY OF JACKSON  
Capital Request FY 23-27  
Justification

Department Name 110-44640 WW Tennis Center  
Item Description Replace netting around courts  
\_\_\_\_\_  
\_\_\_\_\_  
\_\_\_\_\_  
\_\_\_\_\_  
\_\_\_\_\_

Amount \$7,000

Justification Netting surrounds all sides of indoor courts and divides the 2 courts.  
The current netting is 20+ years old. It has dried out, torn in sections, and has holes  
due to age.  
\_\_\_\_\_  
\_\_\_\_\_  
\_\_\_\_\_  
\_\_\_\_\_  
\_\_\_\_\_  
\_\_\_\_\_  
\_\_\_\_\_

CITY OF JACKSON  
Capital Request FY 23-27  
Justification

Department Name 110-44640 WW Tennis Center

Item Description Replace carpet in office/refreshment area and runners in walkways

\_\_\_\_\_  
\_\_\_\_\_  
\_\_\_\_\_  
\_\_\_\_\_  
\_\_\_\_\_  
\_\_\_\_\_

Amount \$7,000

Justification Carpets in the office/refreshment and the runners in the walkway are all older, stained and frayed, with runs typical in office quality carpets. They are no longer stain resistant with professional cleaning.

\_\_\_\_\_  
\_\_\_\_\_  
\_\_\_\_\_  
\_\_\_\_\_  
\_\_\_\_\_  
\_\_\_\_\_  
\_\_\_\_\_  
\_\_\_\_\_



